

Superius

Be - a - ta ma - ter et

Altus

San - ctus San - ctus, San - ctus, San - ctus, San - ctus, San - ctus

Tenor

San - ctus, San - ctus, San - ctus, San - ctus, San - ctus

Bassus

San - ctus, San - ctus, San - ctus, San - ctus, San - ctus

7

in - nu - pta vir - go glo - ri - o - sa

ctus, San - ctus, San - ctus Do - mi - nus De -

San - ctus, San - ctus, Sanctus, San - ctus Do - mi -

14

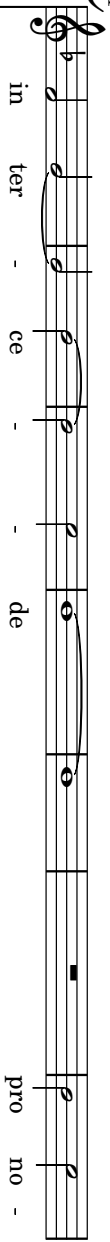
re - gi - na mun - di

us Sa - ba - oth.

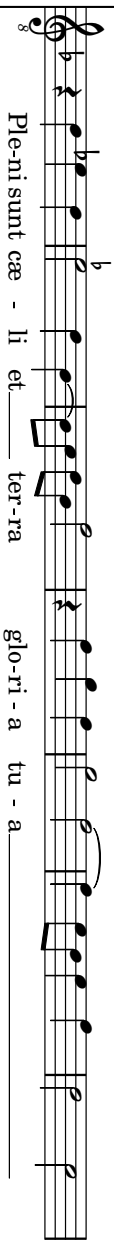
- ctus Do - mi - nus De - us Sa - ba - oth. Ple - ni sunt cae - li et

nus De - us Sa - ba - oth. Ple - ni sunt cae -

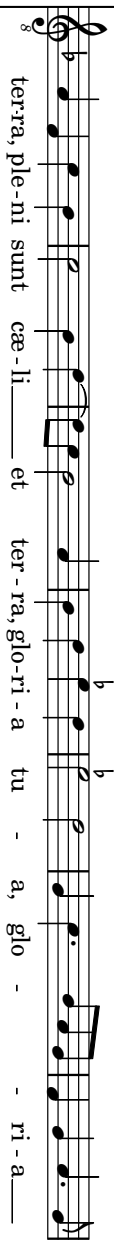
21



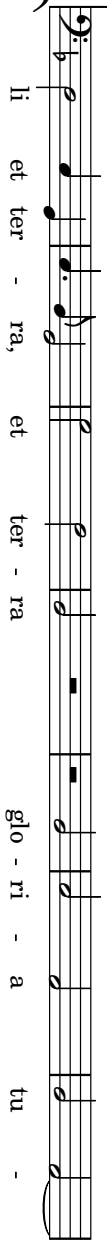
in ter - ce - - de pro no -



Pleni sunt cæ - li et - - ter-ra glo-ri - a tu - a



terra, ple-ni sunt cæ-li et - - ter-ra, glo-ri - a tu - a, glo - - ri - a



li et ter - ra, et ter - ra glo - ri - a tu -

28

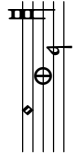
bis ad Do - mi - num pro - no - bis ad Do - mi - num. #

glo - ri - a tu - a glo - ri - a tu - a. a.

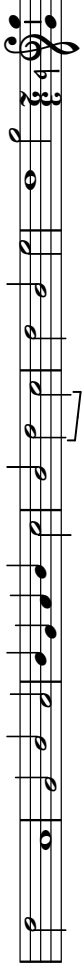
tu - a, glo - ri - a tu - a, glo - ri - a tu - a. a.

a, glo - ri - a tu - a glo - ri - a tu - a. a.

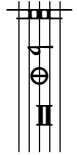
Superius



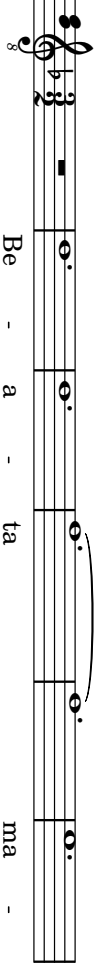
35



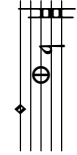
Altus



35



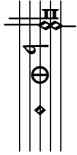
Tenor



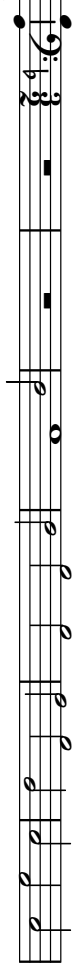
35



Bassus



35



41

san - na in ex - cel - sis ho-san-na in ex - cel - sis

ter. Be - a - ta ma -

na - in ex - cel-sis, ho-san-na in ex - cel - sis, ho-san-na

ex - cel - sis, in ex - cel - sis ho-san-na in ex - cel - sis

49

- sis, ho - san-na in ex - cel-sis, ho-san-na in ex -
 ter. Be - a - ta ma - ter.

in ex - cel - sis, ho-san-na in ex - cel - sis, ho - san -
 ho - san - na in _____ ex - cel-sis ho-san-na in ex - cel - sis, ho-san-

58

cel - sis ho-san-na in ex - cel - sis.

Be - a - ta ma - ter.

na in ex - cel - sis, in ex - cel - sis, ho-san - na in ex - cel - sis.