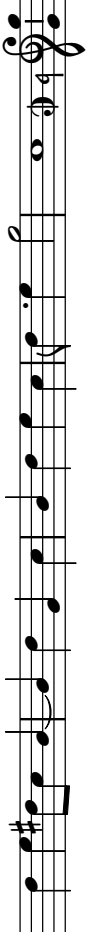
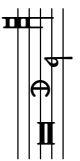
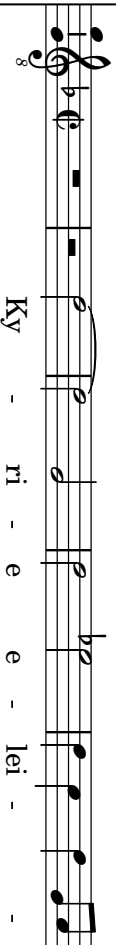
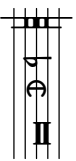


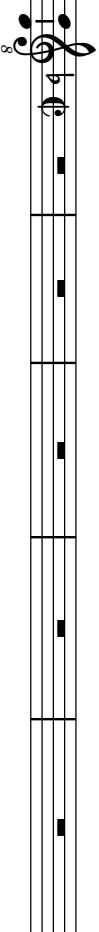
Cantus



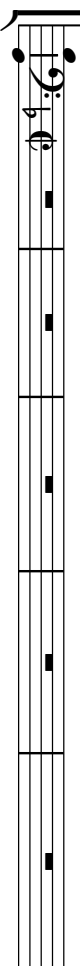
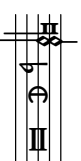
Altus



Tenor



Bassus



6

- lei - - son, Ky - ri - e e - lei - son.
 - - - son
 Ky - ri - e e - - lei - son.
 Ky - ri - e e - - lei - son.

Detailed description of the musical score: The score consists of three staves. The top staff is a vocal line in G major (one flat) with lyrics: '- lei - - son, Ky - ri - e e - lei - son.'. The middle staff is a vocal line in G major with lyrics: '- - - son', followed by a sharp sign (#) above the staff, and then 'Ky - ri - e e - lei - son.'. The bottom staff is a bass line in G major with lyrics: 'Ky - ri - e e - - lei - son.'. The music features various rhythmic values including eighth, sixteenth, and dotted notes, as well as rests and accidentals.

13

Chri - ste e - lei - son, Chri - ste e - lei - son.

Chri - ste e - lei - son, Chri - ste e - lei - son.

Chri - ste e - lei - son, Chri - ste e - lei - son.

Chri - ste e - lei - son.

20

Ky - ri - e e - lei - son
 Ky - ri - e e - lei - son
 Ky - ri - e e - lei - son
 Ky - ri - e e - lei - son

Ky-ri - e - lei - - - - - son.
 ri - e - lei - - - - - son.
 son, - - - - - Ky-ri - e - lei - son.
 son, Ky-ri - e - lei - son.