

Cantus



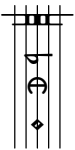
Po - pu - le me - us quid fe - ci ti - bi? Aut

Altus



Po - pu - le me - us quid fe - ci ti - bi? Aut

Tenor



Po - pu - le me - us quid fe - ci ti - bi? Aut

Bassus



Po - pu - le me - us quid fe - ci ti - bi? Aut

6

(Coro I)

in quo con-tri-sta-vi te? Re-spon - de mi - hi. A - gi - os o The - os.

in quo con-tri-sta-vi te? Re-spon - de mi - hi. A - gi - os o The - os.

in quo con-tri-sta-vi te? Re-spon - de mi - hi. A - gi - os o The - os.

Responsio

(Coro II)

(Coro I)

Responsio
(Coro II)

14

San - ctus

De - us.

A - gi - os i - schy - ros.

San - ctus for - tis.

San - ctus

De - us.

A - gi - os i - schy - ros.

San - ctus for - tis.

San - ctus

De - us.

A - gi - os i - schy - ros.

San - ctus for - tis.

San - ctus

De - us.

A - gi - os i - schy - ros.

San - ctus for - tis.

24

(Coro I)

Responsio
(Coro II)

Musical staff for Coro I, first line. Treble clef, key signature of one flat (B-flat). The melody begins with a dotted quarter note on G4, followed by eighth notes on A4, B-flat4, and C5. It continues with quarter notes on D5, E5, and F5, then quarter notes on G5, A5, and B5. The line ends with a whole note on C6.

A - gi-os a - tha-na-tos, e - le-i-son i - - mas. San - ctus et

Musical staff for Coro I, second line. Treble clef, key signature of one flat. The melody begins with a dotted quarter note on G4, followed by eighth notes on A4, B-flat4, and C5. It continues with quarter notes on D5, E5, and F5, then quarter notes on G5, A5, and B5. The line ends with a whole note on C6.

A - gi-os a - tha-na-tos, e - le-i-son i - - mas. San - ctus et

Musical staff for Coro I, third line. Treble clef, key signature of one flat. The melody begins with a dotted quarter note on G4, followed by eighth notes on A4, B-flat4, and C5. It continues with quarter notes on D5, E5, and F5, then quarter notes on G5, A5, and B5. The line ends with a whole note on C6.

A - gi-os a - tha-na-tos, e - le-i-son i - - mas. San - ctus et

Musical staff for Coro I, fourth line. Bass clef, key signature of one flat. The melody begins with a dotted quarter note on G3, followed by eighth notes on A3, B-flat3, and C4. It continues with quarter notes on D4, E4, and F4, then quarter notes on G4, A4, and B4. The line ends with a whole note on C5.

A - gi-os a - tha-na-tos, e - le-i-son i - - mas. San - ctus et

30

in-mor-ta - - lis, mi - se-re-re no - - - bis.

in-mor-ta - - lis mi - se-re-re no - - - bis.

in-mor-ta - - lis, mi - se-re-re no - - - bis.