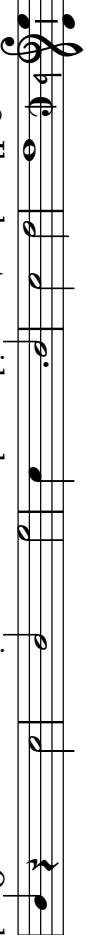


Cantus



2. II - lu-stre quid - dam cer - ni - mus

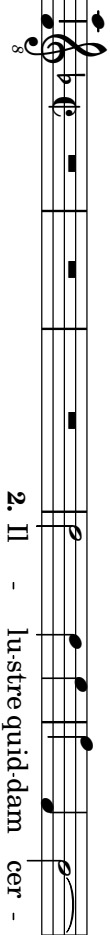
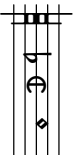
Quod

Altus



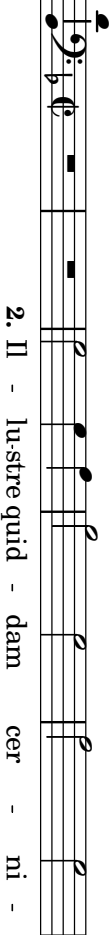
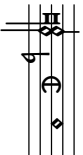
2. II - lu-stre quid - dam cer - ni-mus

Tenor



2. II - lu-stre quid-dam cer -

Bassus



2. II - lu-stre quid - dam cer - ni -

6

ne - - sci - at fi - - nem pa - - ti

8

ni - mus Quod ne - sci - at fi - - nem pa - - ti, Su - bli - me cel - sum in - -

mus Quod ne - sci - at fi - - nem pa - - ti, Su - bli - me cel - sum in - -

12

Su - bli - me cel - sum in - ter - mi - num

Su - bli - me cel - sum in - ter - mi - num

ter - mi - num, su - bli - me cel - sum in - ter - mi - num, in - ter - mi - num

mi - num, in - ter - mi - num, in - ter - mi - num

17

num

An-ti-quius cæ-lo et cha-o, an-ti-quius cæ-lo et cha-

num

An-ti-quius cæ-lo et cha-o

num

An-ti-quius cæ-lo et cha-o, et cha-o, et cha-o

cha - o an - ti - quius cae - lo et cha - o.

an - ti - quius cae - lo et cha - o.

an - ti - quius cae - lo et cha - o.

an - ti - quius cae - lo et cha - o.

29

4. Hunc et pro-phetis te - sti-bus hunc et pro-phetis - tis te - sti -

4. Hunc et pro-phetis te - sti - bus, hunc et pro-phetis te -

4. Hunc et pro - phe - tis te - sti - bus

4. Hunc et pro-phetis te -

bus I - is - dem-que si - gna - to - ri -
 sti-bus, I - is - dem-que si - gna - to - ri -
 sti-bus I - is - dem - que si - gna - to - ri -

46

The image shows a musical score for a vocal part, likely a soprano or alto, in a minor key. The score is written on five staves. The first staff begins with a treble clef, a key signature of one flat (B-flat), and a common time signature. The music consists of a series of notes, some with rests, and a final note with a fermata. The lyrics are: "bet - Ip-sum au - di-reet cre - de - re et". The second staff continues the melody with the lyrics: "bet - Ip-sum au - di-reet cre - de - re, *ip-sum au -*". The third staff continues with the lyrics: "di - reet cre - de - re". The fourth staff continues with the lyrics: "re - de - re". The fifth staff continues with the lyrics: "et". The score includes various musical notations such as rests, beams, and a fermata.

bet - Ip-sum au - di-reet cre - de - re et

bet - Ip-sum au - di-reet cre - de - re, *ip-sum au -*

di - reet cre - de - re

re - de - re

et

ip-sum au -

51

di - ret cre - de - re ip - sum au - di - ret

di - ret cre - de - re ip - sum au - di - ret

di - ret cre - de - re ip - sum au - di - ret

cre - de - re, ip - sum au - di - ret cre - de - re.
de - re, ip - sum au - di - ret cre - de - re.
cre - de - re.
di - ret cre - de - re ip - sum au - di - ret cre - de - re.