

Cantus

Pec - can - tem me quo - ti - - - di - e,

Altus

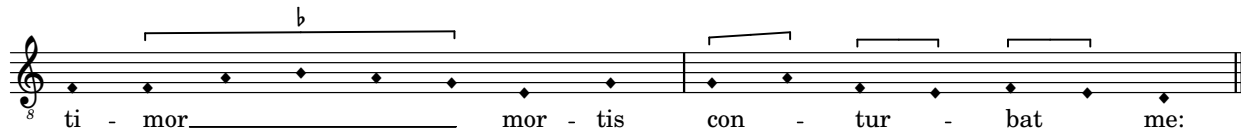
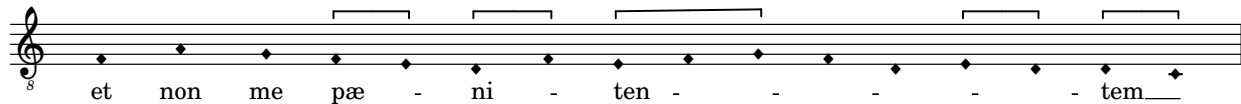
Pec - can - tem me quo - ti - - - di - e,

Tenor

Pec - can - tem me quo - ti - - - di - e,

Bassus

Pec - can - tem me quo - ti - - - di - e,



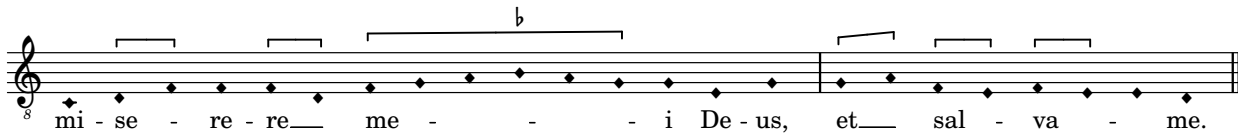
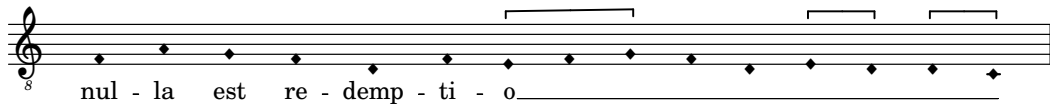
7 Bis

C
 Qui - a in in - fer - no, qui - a in in - fer - - - no

A
 Qui - a in in - fer - no, *qui - a in in - fer - no* qui - a in in - fer - no in in - fer - no

T
 8
 Qui - a in in - fer - - - - no

B
 Qui - a in in - fer - no, qui - a in in - fer - - - no



16 Tribus

C

De - us in no - mi - ne tu - o, in

A

De - us in no - mi - ne tu - o, in no -

T

8

De - us in no -

22

no - mi - ne tu - - o, sal - - vum me fac:

- mi - ne tu - - o, sal - - vum me fac:

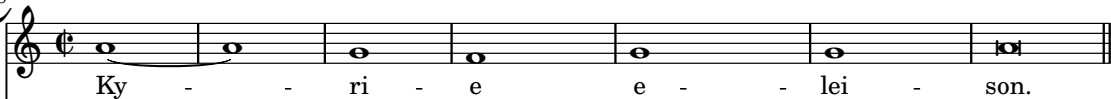
- mi - ne tu - - o, sal - - vum me fac:

et in vir - tu - te tu - a li - be - ra me.

«Quia in inferno» ut supra

28

Cantus



Musical notation for the Cantus part, showing a single melodic line with lyrics. The notes are: Ky (half note), - (quarter rest), - (quarter rest), ri (half note), - (quarter rest), e (half note), e (half note), - (quarter rest), - (quarter rest), lei (half note), - (quarter rest), son. (half note).

Altus



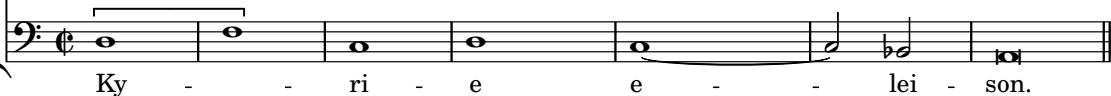
Musical notation for the Altus part, showing a single melodic line with lyrics. The notes are: Ky (half note), - (quarter rest), - (quarter rest), ri (half note), - (quarter rest), ee (quarter note), - (quarter rest), - (quarter rest), - (quarter rest), - (quarter rest), lei (half note), - (quarter rest), son. (half note).

Tenor



Musical notation for the Tenor part, showing a single melodic line with lyrics. The notes are: Ky (half note), - (quarter rest), ri (half note), - (quarter rest), - (quarter rest), ee (quarter note), - (quarter rest), - (quarter rest), - (quarter rest), - (quarter rest), lei (half note), - (quarter rest), son. (half note).

Bassus



Musical notation for the Bassus part, showing a single melodic line with lyrics. The notes are: Ky (half note), - (quarter rest), - (quarter rest), ri (half note), - (quarter rest), e (half note), e (half note), - (quarter rest), - (quarter rest), lei (half note), - (quarter rest), son. (half note).

Cantus
Tenor

8 Chri - ste e - lei - son.

The image shows a musical score for two voices: Cantus and Tenor. The Cantus part is written on a treble clef staff with a soprano C-clef. The Tenor part is written on a bass clef staff with a tenor C-clef. The lyrics are 'Chri - ste e - lei - son.' The word 'Chri' is on the first note, 'ste' on the second, 'e' on the third, 'lei' on the fourth, and 'son.' on the fifth. A slur is placed over the notes for 'e' and 'lei'. The number '8' is written below the first note of the Tenor part.

35

Ky - - ri - - e e - - lei - - son.

Ky - - ri - - e e - - lei - - son.

Ky - - ri - e e - - lei - - son.

Ky - - - - ri - e e - - lei - - son.