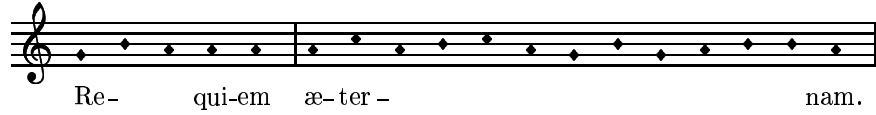


3. GRADUALE

de la Missa Pro Defunctis

Ms. IV de la Catedral de Málaga

CRISTÓBAL DE MORALES



Cantus

Do - na e - is, Do - mi - ne, do - na e -

Altus

Do - na e - is, Do - mi -

Tenor

Do - na e - is, Do - mi - ne,

Bassus

Do - na e - is, Do - mi - ne, do - na e - is,

9

is, do - na e - is, Do - mi - ne, do - na e - is, Do -

-ne, Do - mi - ne, do - na e - is, Do -

do - na, do - na e - is, Do - mi -

Do - mi - ne, do - na e - is, Do - mi -

17

- mi-ne, et lux per -
 -mi — ne, et lux per - pe — tu - a, et lux per -
 8 -ne, et lux per - pe — tu - a lu - ce - at
 -ne, et lux per - pe — tu - a

24

-pe — tu - a lu - ce - at e - is, lu - ce - at, lu - ce - at e -
 -pe — tu - a lu - ce - at, lu - ce - at e -
 8 e - is, lu - ce - at e - is, lu -
 lu — ce - at e - is, lu - ce —

32

-is, lu - ce - at e - is, lu - ce - at e - is.
 - is, lu - ce - at e - is, lu - ce - at e - is, lu - ce - at e - is.
 8 ce - at e - is, lu - ce - at e - is, e - is.
 -at e - is, lu - ce - at e - is.

in me-mo-ri-a æ-ter-na

