

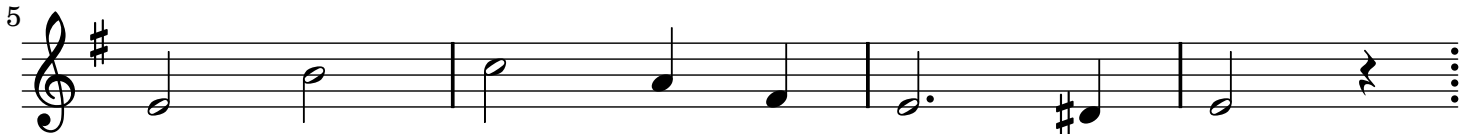
Round on a well-known text

Canon

David Ellyard



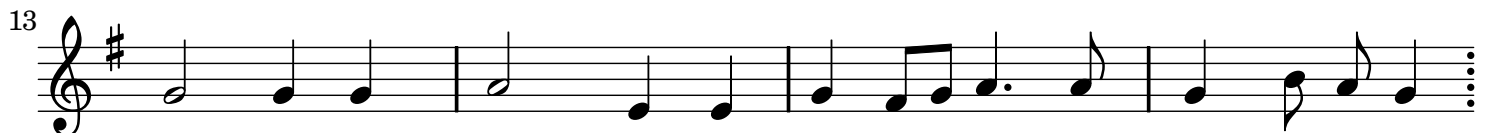
The square, the square on the hy - po - te - nuse



of a right - ang - led tri - ang - le



is e - qual to, is e - qual to the sum of the squares, the



sum of the squares on the two ad - ja - cent sides, fa la la,



fa la la, fa la la, fa la la, and



hey, non-ny no! on the two ad - ja - cent sides.