

Credo RV 591

Violín I y II

Antonio Vivaldi

1. Credo in unum Deum

Allegro

Violín I y II

4

8

11

15

19

23

26

29

33

36



39



43



47



51



55



59



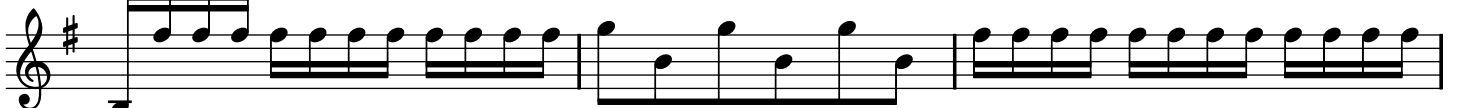
63



66



69



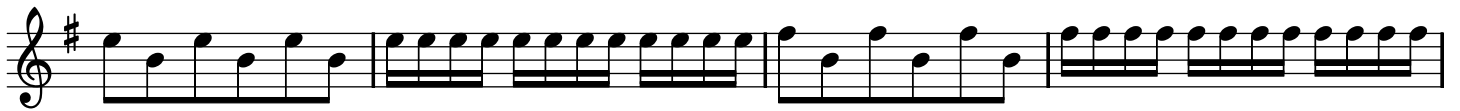
72



76



79



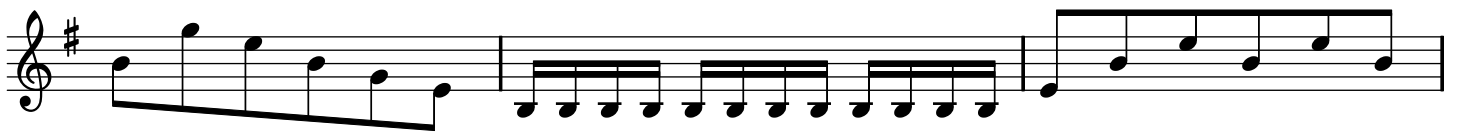
83



87



90

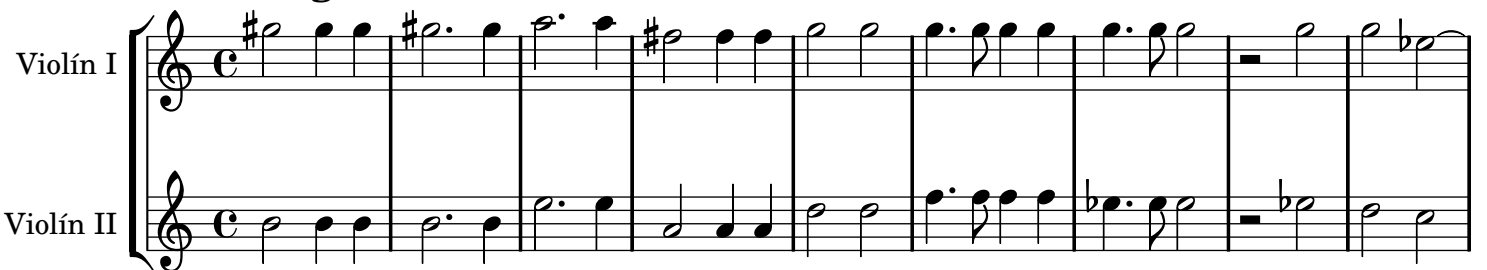


93

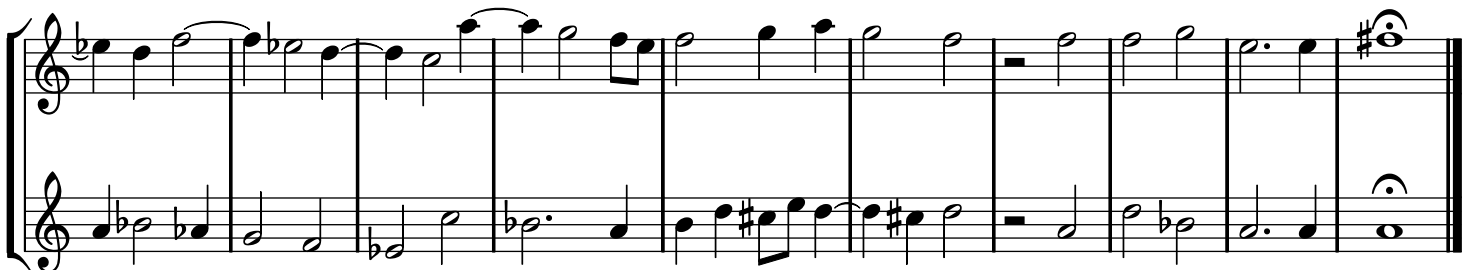


2. Et incarnatus est

Adagio



10



3. Crucifixus

Largo

Violín I

Violín II

Musical notation for Violín I and Violín II, measures 1-7. The music is in common time (C) and begins with a whole rest in both staves. The Violín I part features a melodic line with a sharp sign on the second measure, while the Violín II part provides a harmonic accompaniment.

8

Musical notation for Violín I and Violín II, measures 8-13. The Violín I part continues its melodic line with various rhythmic values, while the Violín II part maintains a steady accompaniment.

14

Musical notation for Violín I and Violín II, measures 14-20. The Violín I part features a melodic line with a sharp sign on the second measure, while the Violín II part provides a harmonic accompaniment.

21

Musical notation for Violín I and Violín II, measures 21-26. The Violín I part continues its melodic line with various rhythmic values, while the Violín II part maintains a steady accompaniment.

27

Musical notation for Violín I and Violín II, measures 27-33. The Violín I part continues its melodic line with various rhythmic values, while the Violín II part maintains a steady accompaniment.

4. Et resurrexit

Allegro

Violín I y II

Musical notation for Violín I y II, measures 1-3. The music is in 3/4 time and begins with a sharp sign. The Violín I y II part features a rhythmic accompaniment.

4

Musical notation for Violín I y II, measures 4-6. The Violín I y II part continues its rhythmic accompaniment.

51



55



59



62



65



69



73



77



81



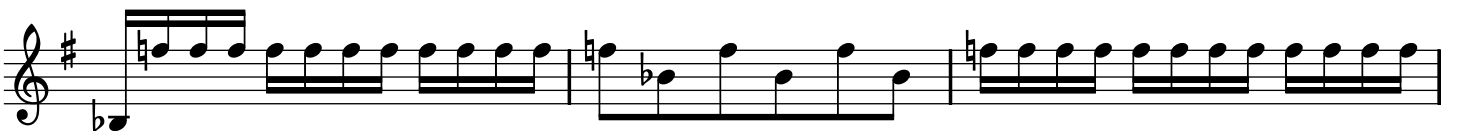
84



88



91



94



97



100



103



106



110



114



118



122



126



130

