

UNIVERSITY OF MÁLAGA

## ***ADDRESSES DIRECTORY***

---

***STAFF TRAINING WEEK***

***MÁLAGA***

**30th Anniversary ERASMUS +**

## RECTORADO / RECTORATE (UNIVERSITY'S MAIN BUILDING)

**ADDRESS:** Avenida de Cervantes, nº 2. MÁLAGA.

**HOW TO ARRIVE:**

- From airport: take bus line A to “Paseo del Parque” (bus stop num. 366 and num 301) and walk for 4 minutes to the University's Main Building (Rectorado).
- From Train Station María Zambrano there are 3 different buslines:
  - 1<sup>st</sup> walk to **Calle Salitre** (Salitre Street) and take **bus line 3** (bus stop: Salitre- Jacinto Verdaguer **num. 368**) and get off *at* bus stop “Paseo del Parque- Ayuntamiento (townhall) num. 1123.  
You can also walk to **Calle Ayala** (Ayala Street) and take the same bus line (bus stop: Ayala-Arcos **num. 362**) and get off at bus stop “Paseo del Parque- Ayuntamiento” (townhall) **num. 1123**.
  - There are 2 more bus lines: **line 16 and line 1** (in the same streets) which have the same bus stops **num. 362.368**, take any bus you that want and get off at bus stop “Paseo del Parque” num. **367 or 117**.

When you arrive in “Paseo del Parque”, walk to the University's Main Building (Rectorado).

**MAP:**





Rectorate  
(University's Main  
Building)

**SERVICIO DE RELACIONES INTERNACIONALES Y COOPERACIÓN /**  
**INTERNACIONAL RELATIONS AND COOPERATION UNIT**

**ADDRESS:** Aulario Rosa Gálvez - Bulevar Louis Pasteur, 35. Málaga. (Next to Escuela Técnica Superior de Telecomunicaciones e Informática)

**HOW TO GET THERE:**

- From city center (Alameda Principal **num. 2101** or Paseo del Parque **num. 302, 303**): take **bus line 11** to Bulevar Louis Pasteur (get off at the last bus stop **num. 2056** and walk around 2 minutes). The International Relations and Cooperation Unit building is situated in the parking close to the Schools of Telecommunication Engineering and Computer Sciences.

**MAP:**





**INTERNACIONAL  
RELATIONS AND  
COOPERATION UNIT**

**BIBLIOTECA GENERAL / GENERAL LIBRARY**

**ADDRESS:** Campus de Teatinos, next to Faculty of Law.

**HOW TO ARRIVE:**

- From city center (Alameda Principal): take bus **line 11** and get off at Faculty of Law (bus stop **num. 833**).

**MAP:**







**GENERAL LIBRARY**



**FACULTY OF LAW**

### **ENSEÑANZA VIRTUAL Y LL. TT. (ELVT) / E-LEARNING AND TECH. LABS**

**ADDRESS:** Campus de Teatinos. Edificio López Peñalver. Calle Jiménez Fraud, nº 10.

**HOW TO ARRIVE:**

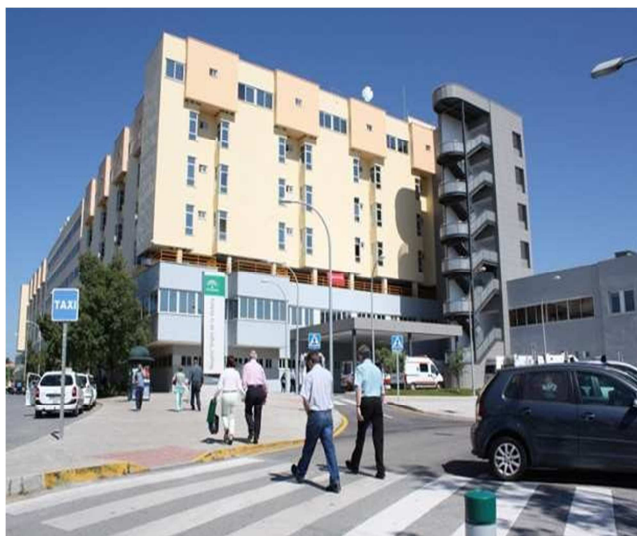
- From city center (Alameda Principal): take **bus line 11** to Av. Louis Pasteur and get off at the last bus stop **num. 2056**). The building is situated close to Hospital Clínico and behind of the Faculty of Medicine.

**MAP:**





**EDIFICIO LÓPEZ PEÑALVER**



**HOSPITAL CLÍNICO**



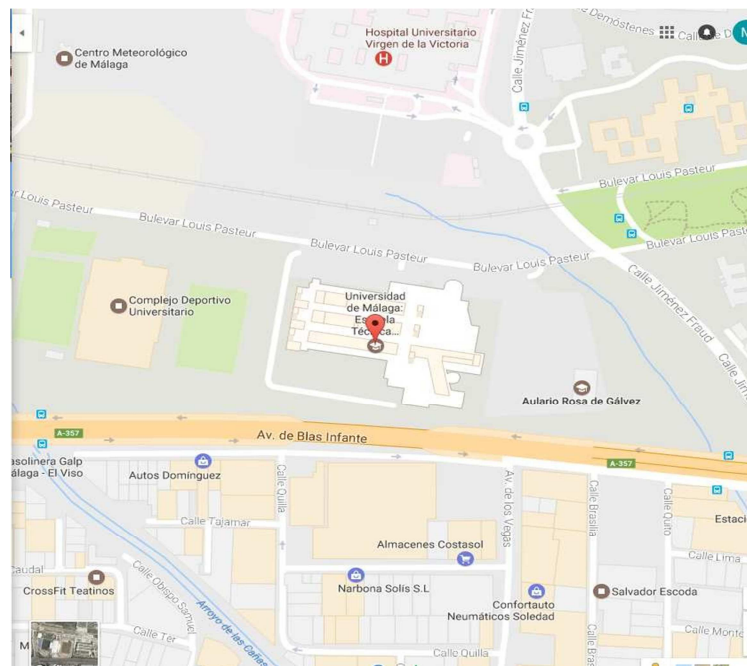
**FACULTY OF MEDICINE**

## COMPLEJO DEPORTIVO UNIVERSITARIO



### HOW TO ARRIVE:

- MAP:**



**ENGINEERING CENTRE,  
SCHOOL OF COMPUTING  
SCIENCES**

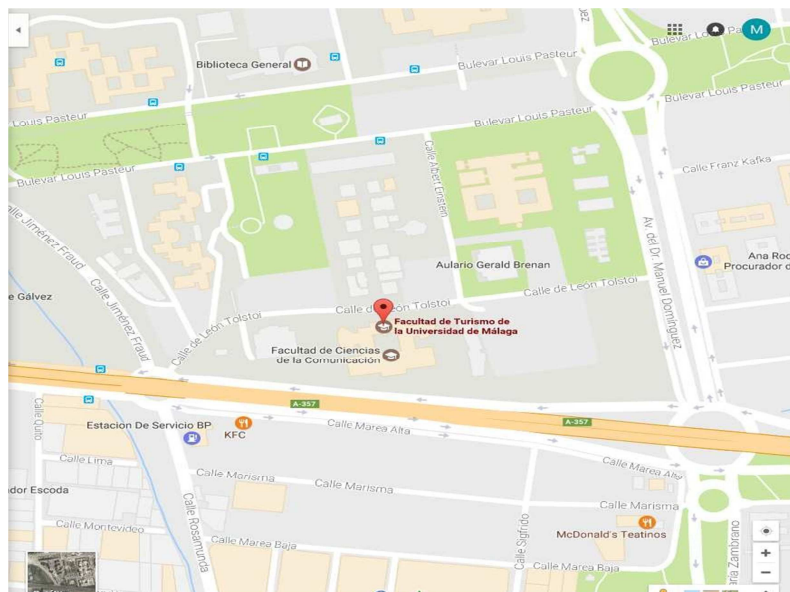
## **FACULTAD DE TURISMO / FACULTY OF TOURISM**

**ADDRESS:** Campus de Teatinos. Facultad de Turismo. C/ León Tolstoi s/n

**HOW TO ARRIVE:**

- From city center (Alameda Principal): take **bus line 11** to Av. Louis Pasteur **bus stop num. 833** in front of Faculty of Law then cross the street. The Faculty of Tourism is behind of the Faculty of Philosophy, you only have to walk for 5 minutes to the Faculty of Tourism.

**MAP:**



**FACULTY OF TOURISM**





FACULTY OF PHILOSOPHY

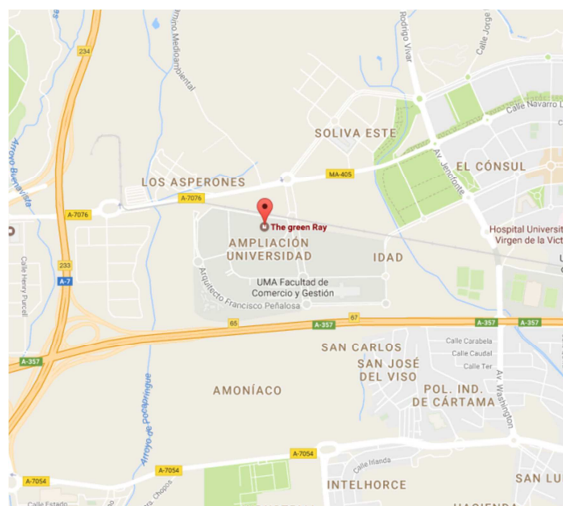
## VICE RECTORADO DE INNOVACIÓN Y EMPRENDIMIENTO/ VICE-RECTOR OF SOCIAL INNOVATION AND ENTREPRENEURSHIP

**ADDRESS:** The Green Ray building, Avenida, Louis Pasteur, 47

**HOW TO ARRIVE:** There are two options to arrive to VICE-RECTOR OF SOCIAL INNOVATION AND ENTREPRENEURSHIP, which is quite far away, so please follow these instructions carefully.

- From city center (Alameda Principal): take **bus line 11** to Avenida Louis Pasteur (last **bus stop num. 2056**). Then take the metro to the last metro stop “**Andalucía Tech**”.
- From city center (Alameda Principal) take **bus line 11** and go to **María Zambrano Train Station** (here is the first metro stop called “María Zambrano”) then take the metro to the last metro stop “**Andalucía Tech**”.

**MAP:**





**THE GREEN RAY  
BUILDING**

## OTRI

**ADDRESS:** Avenida. Severo Ochoa num 4. Edificio Institutos Universitarios de Investigación. Parque Tecnológico de Andalucía 29590 Campanillas. Málaga. Tel: 952 13 25 91

### **HOW TO ARRIVE:**

- From city center (Alameda Principal): take **bus line 25 (num. 1701, to Severo Ochoa Avenue (bus stop num. 2520 “Avenida Juan López Peñalver-Marie Curie”)**. Then walk no more than 4 minutes to num 4 of this Avenue.
- From city center (Alameda Principal): take **bus line 19 (num. 1701, to Severo Ochoa Avenue (bus stop num. 2520 “Avenida Juan López Peñalver-Marie Curie”)**. Then walk no more than 4 minutes to num 4 of this Avenue.

### **MAP:**





Institutos Universitarios de  
Investigación Building

## MÁLAGA COUNTY GOVERNMENT / DIPUTACIÓN DE MÁLAGA

**ADDRESS:** Pacífico Street (Calle Pacífico) num 54, Málaga.

### **HOW TO ARRIVE:**

There are two options to be able to arrive to the correct place:

- First option: METRO. Take line 2 (blue), and then get off in metro stop “El Torcal, La luz-Paz”
- Second option: from city center (Calle Paseo de los Curas) take **line 40 num 3901** to “Sacaba beach” and get off in bus stop nº 3906 (Pacífico-Diputación)

### **MAP:**



**MÁLAGA COUNTY  
GOVERTMENT**

## FACULTAD DE ECONOMÍA/ FACULTY OF ECONOMICS

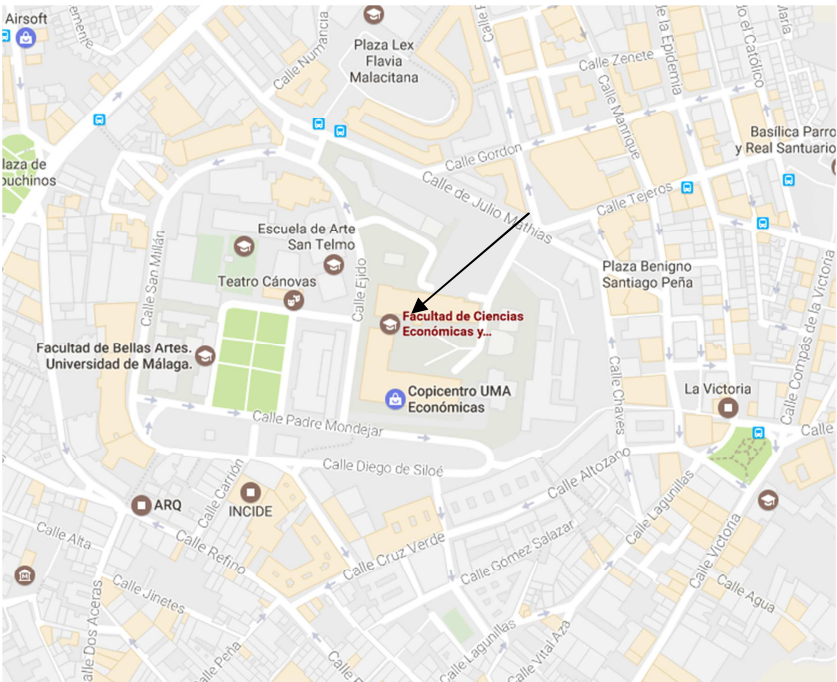
**ADDRESS:** Calle Ejido, 6, Málaga. Campus de El Ejido

**HOW TO ARRIVE:** There are three buses that you can take in the same bus stop:

- Take bus **Line 1**, bus stop **num.1258** and get off at bus stop “Fernando El Católico” num. 105.
- Take bus **Line 37**, bus stop **num.1258** and get off at bus stop “Fernando El Católico” num. 105.
- Take bus **line C2**, bus stop **num.1258** and get off at bus stop “Fernando El Católico” num. 105.

In “Fernando El Católico” Street you will see a big Church to the right, go straight trying to find “Mitjana” Street, once you are there go straight until the end of the street (Mitjana Street, Tejeros Street) then, you will see a big slope, walk on it and you will finally be at Faculty of Economics.

### MAP:





**FACULTY OF  
ECONOMICS**



## FACULTIES OF UNIVERSITY OF MÁLAGA

Nowadays, University of Málaga has grown up and has a wider variety of faculties where people can earn a degree and acquire a high level of education.

For further information: <http://www.uma.es/conoce-la-uma/info/7033/teatinos/>

- ENGINEERING CENTRE, SCHOOL OF COMPUTING SCIENCE: Bulevar Louis Pasteur, 35



- FACULTY OF SCIENCE.: Bulevar Louis Pasteur, 31



- FACULTY OF COMMUNICATION AND TOURISM: Calle de León Tolstoi s/n



- FACULTY OF EDUCATION AND PSYCHOLOGY: Bulevar Louis Pasteur, 25



- FACULTY OF LAW: Bulevar Louis Pasteur, 26



- FACULTY OF PHILOSOPHY AND LETTERS. Lugar Arroyo Teatinos, s/n





- FACULTY OF MEDICINE.: Bulevar Louis Pasteur, 32



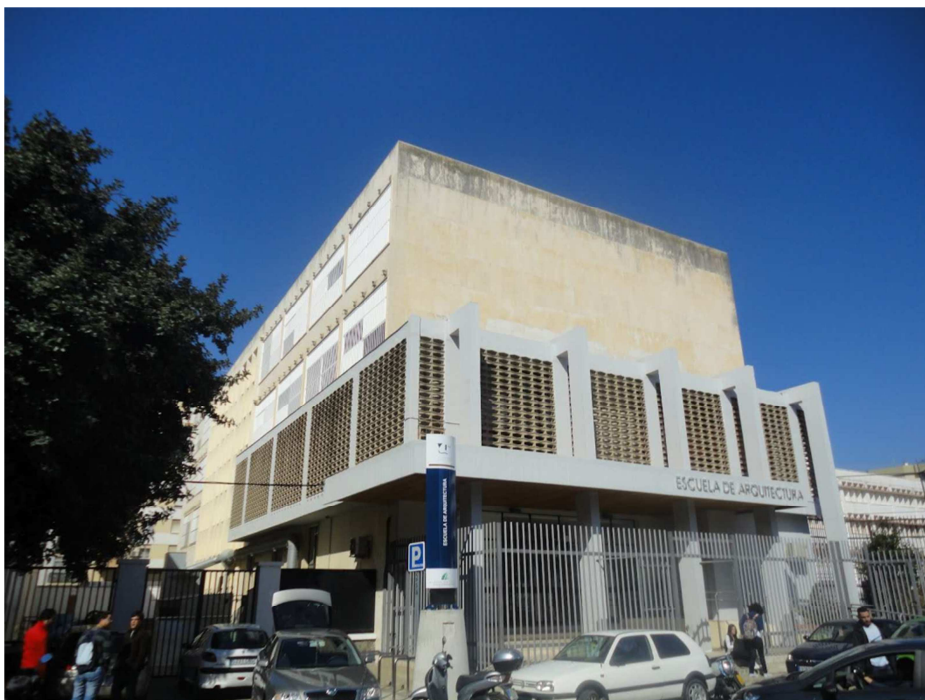
- ENGINEERING CENTRE: Edificio de Ingenierías, UMA Campus de Teatinos, C/ Doctor Ortiz Ramos



- FACULTY OF ECONOMIC: Calle Ejido, 6



- FACULTY OF ARCHITECTURE.: Plaza del Ejido, s/n





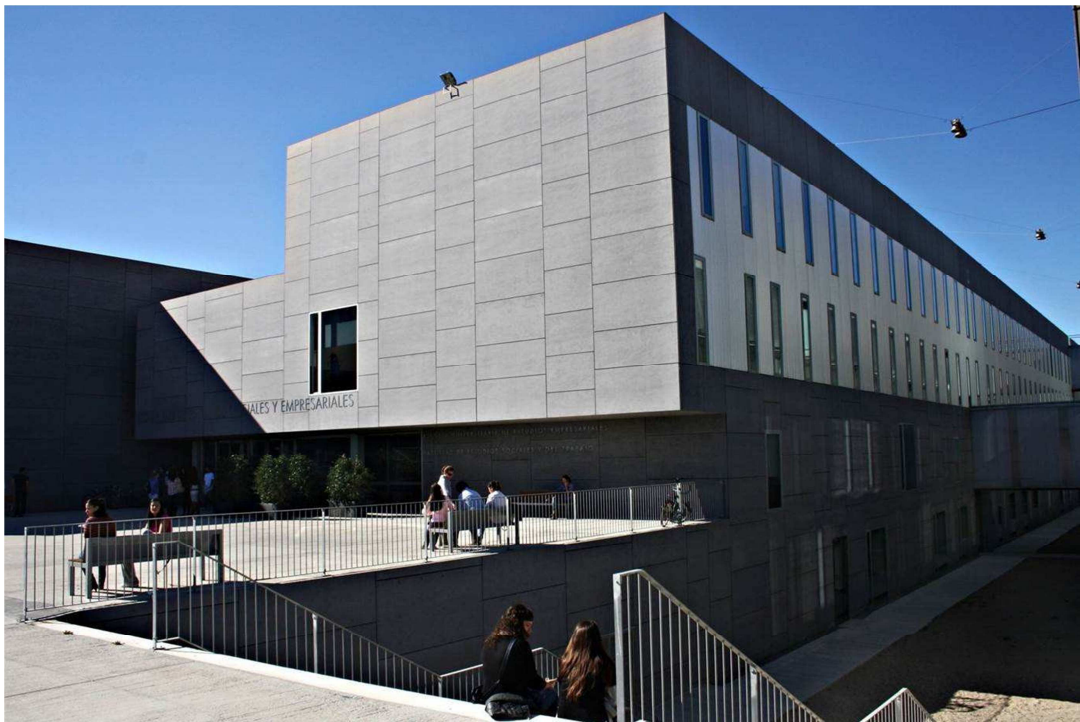
- FACULTY OF ARTS: Plaza de EL EJIDO s/n



- FACULTY OF HEALTH SCIENCES: Arquitecto Francisco Peñalosa, 3



- FACULTY OF BUSSINESS AND ADMINISTRATION: Avenida Francisco Trujillo Villanueva, 1



- FACULTY OF SOCIAL STUDIES: Av Francisco Trujillo Villanueva, s/n



