



**iCLA**  
International College of Liberal Arts

# Exchange Program Spring 2020

## Liberal Arts Education

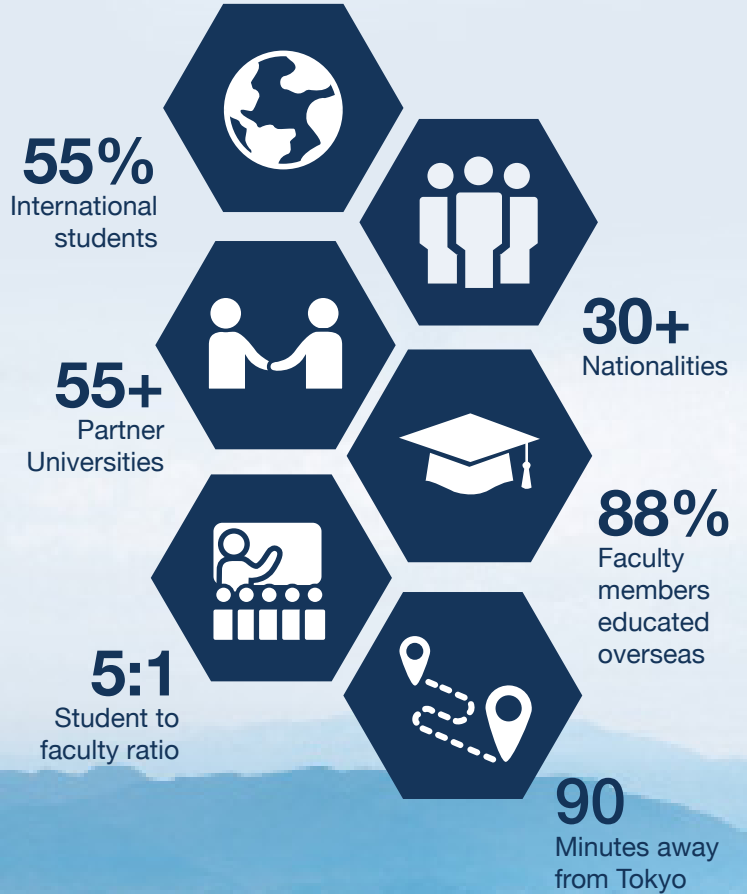
Courses in Arts & Music, Japan Studies, Global Business & Economics, Politics, Sociology, Psychology and others. Workshops in Japanese Instruments, Martial Arts, Performing & Visual Arts, and Music.

## Japan Area Studies & Language Program

Understand Japan with a cross-disciplinary approach that includes experiential Japanese arts and culture workshops. Japanese language courses from a beginner to advanced level.

## Scholarship Opportunity

JASSO Scholarship for Short-term Study in Japan currently available (Monthly stipend: JPY 80,000).



# Program Details

## Study Period

**Spring Semester:** Early April to Early August.

**Fall Semester:** Early September to Late December.

## iCLA Exchange Requirements

Completed at least one academic year at home institution

Cumulative GPA of at least 2.5 on a 4.0 scale or equivalent.

TOEFL score: 213 (CBT), 550 (PBT), 80 (iBT);  
Cambridge FCE

## How to Apply

Submit the designated forms and required documents to the international office at your home institution.

**Application Period**  
July 15 – Oct 15, 2019

**Screening Period**  
Oct 16 – 23, 2019

**Notification Day**  
Oct 24 – 25, 2019

**CoE Application**  
Nov 28, 2019

## Required Documents

Passport Copy (photo page)

Form 1: Application for Study Abroad at iCLA

Form 2: Faculty Recommendation Letters  
(two copies required)

Form 3: Statement of Purpose

Form 4: Study Plan at iCLA

Form 5: Mental Health History and  
Class Assistance

Certificate of English Language Proficiency  
(For non-native English-speakers only)

All Post-Secondary Academic Transcript(s)

## Approximate Fees\*\* (JPY)

Student Accommodation	1 semester	2 semesters
Room and Utilities	211,500	423,000
Board	165,000	330,000
Cleaning Fee	30,000	30,000
Total	406,500	783,000

\*\*participation in meal plan is mandatory (exemption may be given for medical or religious reasons.)

\*\*you are required to purchase insurances (see *Information for Prospective Students* for details.)

### Contact:

International College of Liberal Arts (iCLA), Yamanashi Gakuin University  
2-7-17 Sakaori, Kofu, Yamanashi, 400-0805, Japan. Tel: +81 55 224 1350  
Email: [icla.inbound@ygu.ac.jp](mailto:icla.inbound@ygu.ac.jp)