

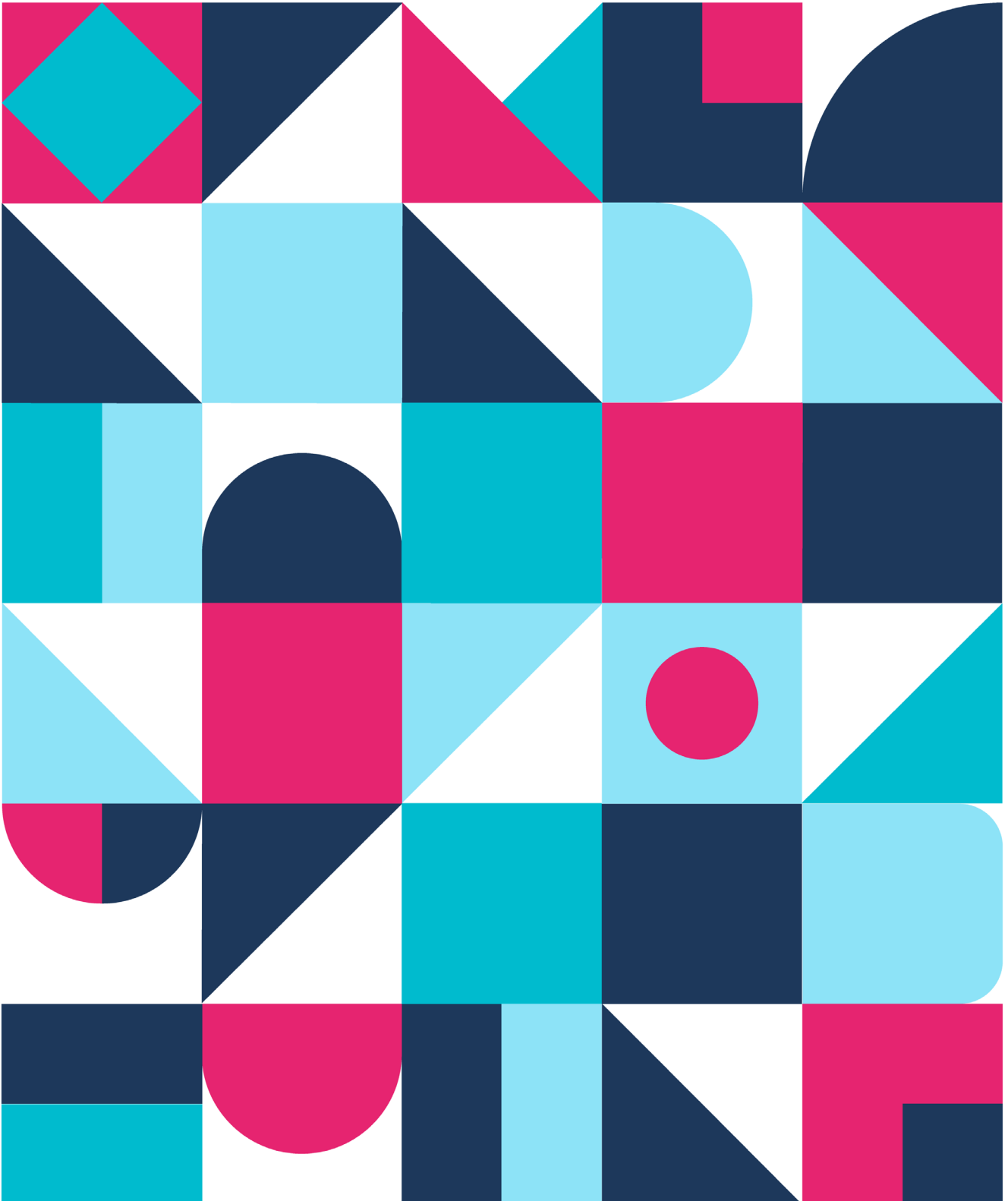
2020/2021



UNIVERSIDAD
DE MÁLAGA

Vicerrectorado de Movilidad y
Cooperación Internacional

International Exchange STUDENT GUIDE



Índice

1	Welcome to our Universidad de Málaga	
2	International Relations office	
3	Universidad de Málaga	
4	Academic Information	
4.1	Language of instruction	PAG 8
4.2	Academic offer	PAG 8
4.3	Courses taught in english	PAG 9
4.4	Academic programme	PAG 10
4.5	European Credit Transfer System	PAG 10
	• Créditos máximos permitidos	PAG 11
	• Mínimo de créditos permitidos	PAG 11
4.6	Grading system	PAG 12
5	Main Locations	
6	UMA Services	
6.1	Accommodation	PAG 16
6.2	Libraries	PAG 17
6.3	Psychological Attention Service	PAG 17
6.4	University Sports Centre	PAG 18
6.5	Culture	PAG 19

7	Integration Support	
7.1	Welcome to UMA	PAG 20
7.2	Erasmus Student Network (ESN)	PAG 21
7.3	UMA-Atech Bridge with South Korea	PAG 21

8	Living in Malaga	
8.1	Our culture	PAG 22
	• Weather	PAG 22
	• Festivities	PAG 23
	• Gastronomy	PAG 23
	• Entertainment and Leisure	PAG 23
8.2	Arrival in Malaga	PAG 24
8.3	Urban Transport	PAG 25
	• Bus	PAG 25
	• Subway / tram	PAG 26
	• Short distance trains: cercanías	PAG 27
8.4	Bank Holidays	PAG 28
8.5	Shopping Hours	PAG 28
8.6	Post Offices	PAG 28
8.7	Health care	PAG 29
	• European Students	PAG 29
	• Non-European Students	PAG 29
8.8	Student Visa	PAG 30

9	Relevant information	
9.1	Phones Numbers of Interest	PAG 32
9.2	Offices of Interest	PAG 33

1

Welcome to our Universidad de Málaga (UMA)

This pre-arrival and orientation guide provides a practical guidance for living and studying in Malaga as an exchange student. Besides, it provides main information about UMA (academic offer, calendar, pre-arrival procedures, services, etc.), which is often required by future exchange students selected to study at UMA.

For further administrative procedures, there is another guide (Welcome Guide) that will be sent by email to incoming students after the nomination deadlines.

The information included in both guides will help you to enjoy your stay with us. In case of doubt, do not hesitate to contact our International Relations Office for further support.

Thank you for choosing Universidad de Malaga.





2

Contact details

INTERNATIONAL RELATIONS OFFICE

ADDRESS

Edificio Rosa de Gálvez (First Floor)
Bulevar Louis Pasteur, 35
Campus de Teatinos, 29071 - Malaga, España

OFFICE HOURS

9am - 2pm, from Monday to Friday
(Closed during Bank Holidays, Easter week, Christmas Holidays and August-Summer Holidays)

TELEPHONE




+34 952 131 111

EMAIL

international@uma.es

WEB

www.uma.es/relaciones-internacionales

 @rriiuma
 @rriiuma
 /relacionesinternacionalesuma



CONTACT DETAILS

Susana Cabrera Yeto
VICE-CHANCELLOR FOR INTERNATIONAL
MOBILITY AND COOPERATION
+34 952 133 203 | vrinternacional@uma.es

José Jesús Delgado Peña
DEPUTY VICE-PRESIDENT FOR INTERNATIONAL
COOPERATION
+34 952 136 339 | dirinternacional@uma.es

Elidia Beatriz Blázquez Parra
DEPUTY VICE-PRESIDENT FOR INTERNATIONAL
MOBILITY
+34 952 136 512 | dirmovilidad@uma.es

Ricardo del Milagro Pérez
HEAD OF INTERNATIONAL RELATIONS OFFICE
+34 952 137 860 | rdmilagro@uma.es



ERASMUS+ KA103

Lilian Barranco

HEAD OF ERASMUS+ KA103

+34 952 134 144 | lbarranco@uma.es

OUTGOING STUDENT ADVISORS

+34 952 134 283 | outgoing@uma.es

Laura Mena / Clara González

INCOMING ADVISORS

+34 951 953 115 | incoming@uma.es

INTERNATIONAL CREDIT MOBILITY ICM/ERASMUS+ KA107

Margarita Delgado

HEAD OF ERASMUS+ KA107

+34 952 137 349 | icm@uma.es

Lorena Caro / Estrella Lavado

INCOMING & OUTGOING STUDENT/STAFF ADVISORS

+34 952 136 302 | icm@uma.es

NON-EU EXCHANGE PROGRAMMES ISEP / PIMA / LECTURESHIP PROGRAMME

M. Carmen Doblás

SENIOR COORDINATOR / AGREEMENTS

+34 952 124 300 | mcdoblas@uma.es

Isabel Martín

OUTGOING STUDENT ADVISOR

+34 951 953 116 | outgoing@uma.es

Magdalena de la Chica

INCOMING STUDENT ADVISOR

+34 952 134 283 | incoming@uma.es

AMERICA, ASIA AND OCEANIA

Virginia Escriche

PROGRAMME COORDINATOR

+34 951 953 114 | vescriche@uma.es

Isabel Martín

OUTGOING STUDENT ADVISOR

+34 951 953 116 | outgoing@uma.es

Magdalena de la Chica

INCOMING STUDENT ADVISOR

+34 952 134 283 | incoming@uma.es

TRANSCRIPT OF RECORDS (EVERY MOBILITY PROGRAMME)

Delia García

COORDINATOR

+ 34 951 953 117 | digarcia@uma.es

INTERNATIONAL PROJECTS ERASMUS+ PROJECTS

Margarita Delgado

HEAD OF ERASMUS+ PROJECTS

+34 952 137 349 | intprojects@uma.es

María Vera / Miguel Moreno

INT. PROJECT COORDINATORS

+34 952 137 349 | intprojects@uma.es

3

Universidad de Málaga

Universidad de Malaga is a young institution. This state-owned institution was founded in 1972 and has an annual budget exceeding 250 million Euros. With more than 35,000 students and 2,400 teachers, UMA's study options comprises 60 Bachelor's programmes, over 50 Master's programmes, over 40 PhD programmes and around 100 courses held throughout the academic year. These programmes are carried out by 18 faculties, with a total of 81 departments.



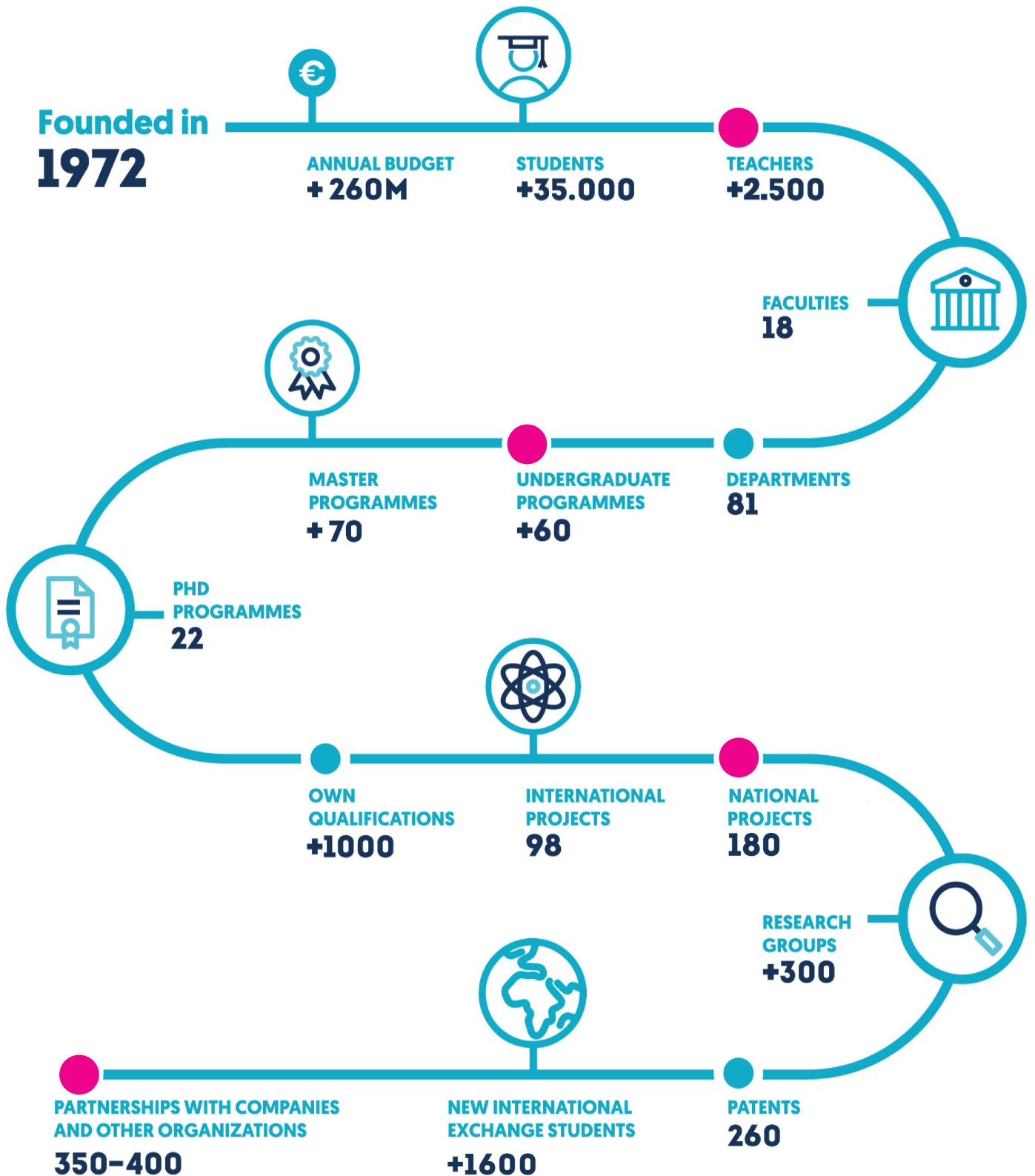
There are 278 research groups currently involved in 180 national projects and 30 international or European projects. In recent years, the number of partnerships with companies and other organizations has ranged between 350 and 400; furthermore, an average of 50 patents per year have been registered, a third of these having international relevance.

Each year our university welcomes over 1600 new international exchange students from different mobility programs as Erasmus+ KA103, Erasmus+ KA107, ISEP, PIMA and UMA agreements. We have a large amount of agreements with some of the most prestigious universities (especially, in Europe, South Korea and Latin America).

UMA constitutes one of the three vertices of the so-called "productive triangle" of the city, together with the airport and the PTA (Andalusian Science and Technology Park). The latter has close ties with the University due to the constant flow of ideas, highly qualified professionals and advanced technologies.

At present, the UMA has two campus, El Ejido and Teatinos – including [la Ampliación](#), which is an extension of Teatinos Campus-, in addition to other buildings located in different parts of the city. The ultimate objective of the policy of the university regarding infrastructure is to eventually have all university centres and services located in the Teatinos campus.

UMA IN NUMBERS



4

Academic Information

UMA

4.1 LANGUAGE OF INSTRUCTION

The language of instruction at UMA is Spanish. Therefore, those students who do not speak Spanish usually have difficulties in finding the appropriate courses and communicating during their stay in Malaga.

We do not require any certification, although students are expected to be able to follow lectures in Spanish. In accordance with the Common European Framework of Reference for Languages, a B1 Spanish level is advisable.

Note: Special mention to the students from Health Sciences for the face- to- face communication with patients.

4.2 ACADEMIC OFFER

These are the instructions to find the academic offer and teaching guides:

- 1 Go to the main page and click on "Servicios" (main menu) and select "Ordenación Académica". After that, you have to click on "Programación Docente" (right row):
<http://www.uma.es/servicio-ordenacion-academica/cms/menu/programacion-docente/>
- 2 Choose "Programación Docente de Títulos de Grado". (Hereinafter cited as PROA)
- 3 Faculty, bachelor degree name and year (curso) must be selected in order to find the required list of courses.
- 4 Select the course and click on "Consultar la guía docente de la asignatura" on the left in order to download a pdf file with the required information.

En nuestros tutoriales online podrás encontrar la ilustración de estas indicaciones:
<https://www.youtube.com/watch?v=ASxQ5fm7aDo>

4.3 COURSES TAUGHT IN ENGLISH

The language of instruction at UMA is Spanish, although there are some courses offered in English. However, these are quite demanded and there is a limit of exchange students per course. Therefore, our institution cannot guarantee that courses taught in English will be available for every exchange student. This is the list of courses taught in English is included in this link: <https://www.uma.es/relaciones-internacionales/cms/menu/erasmus/incoming-students/at-the-faculty/courses-schedules-and-calendars/> In order to assure in which language the courses will be taught, it is advisable to read the teaching guide of each course or to double check the list of courses taught in English.

SPANISH LANGUAGE COURSE FOR INTERNATIONAL EXCHANGE STUDENTS

The Spanish Course for Erasmus+ and International Exchange Students allows students to consolidate and improve their Spanish language skills, in order to improve understanding of the subjects that they will be studying at UMA.

This course is voluntary and it is offered and arranged by the International Centre for Spanish (CIE) located in the following address:



Address	Avenida de la Estación s/n. El Palo 29017 - Málaga Tel.+34951952738 - Fax+34951952742
Email	cie@uma.es
Web	Please, check the specific dates, registration fees, class hours and ECTS credits on the following link: http://www.uma.es/centrointernacionaldeespanol/

This Spanish course always takes place at the beginning of September (first semester and full year students) and at the beginning of February (second semester students).

It is important to consider that the ECTS credits obtained with this course will NOT be included in the Transcript of Records. Nevertheless, you will receive a certificated Diploma from the CIE in which states the number of ECTS credits obtained after completing this course. The recognition of these credits will depend entirely on the home university criteria.

In order to apply for it, you will receive an email from the CIE with the instructions that you will need to follow and the application procedure. For any further doubt, please contact them on cie@uma.es

4.4 ACADEMIC PROGRAMME

Number of subjects: Spanish students normally take 5 subjects per term.

Number of hours per week: Students spend 20–25 hours in lectures.

Number of weeks per term: 15 weeks + 3 or 4 weeks for exams.

The academic year runs from September/October to June (in some cases early July) with exams offered in February for the first term courses and finals in late June and early July for annual and second term courses which test cumulative knowledge of the entire course. There is also a second examination call in September only for students who did not pass at any ordinary examination call. Students must apply on EMI for the courses of the September call.

MINIMUM LENGTH OF STAY

The minimum period of stay at UMA will be 4.5 months. This is the period necessary to complete the administrative and academic requirements. Students who will stay shorter will not be assessed and will not receive the Transcript of Records.

The length of the mobility could be inferior only when the mobility is aimed at doing research or practical courses in Medicine, Health Science or Fine Arts.

4.5 EUROPEAN CREDIT TRANSFER SYSTEM (ECTS)

The European Commission has developed the European Credit Transfer System (ECTS) to help students make the most of their studies abroad. This system is a way of measuring and comparing learning achievements and transferring them from one institution to another. Likewise, it helps higher education institutions to enhance their co-operation with other institutions by improving access to information on foreign curricula and providing common procedures for academic recognition.

ECTS credits are a value allocated to modules to describe the student workload required to complete them. They reflect the quantity of work each course requires in relation to the total quantity of work required to complete a full year of academic study at the institution, that is, lectures, practical work, seminars, private work – in the laboratory, library or at home – and examinations or other assessment activities.

UMA has introduced the ECTS into all its faculties and schools. With this system, 60 credits represent one year of study (in terms of workload); normally 30 credits are awarded every six months (a semester).

MAXIMUM CREDITS PERMITTED

In accordance with the European Commission and the new System of European Credit Transfer, exchange students accepted by UMA are obliged to take NO MORE than 60 credits for a full year and 30 credits for one semester.

30 ECTS credits for one semester | 60 ECTS credits for a full year

- **Note:** As an exception UMA offers the flexibility to slightly increase this amount and allows to enroll a maximum of 36 (one semester) ECTS credits and 66 (full year) ECTS credits in those cases where it is necessary.

MINIMUM CREDITS PERMITTED

EUROPEAN STUDENTS:

1 course per semester

NON EUROPEAN STUDENTS:

18 ECTS credits for one semester.

36 ECTS credits for a full year.

Home institutions set the policy regarding the amount of credits obtained through an international exchange.

Exchange students are responsible for being aware of these policies and procedures before starting the mobility programme.

4.6 GRADING SYSTEM

The grading system used by Spanish universities is based on specific attainment levels, rather than on a numerical scale. This is the equivalence with the ECTS grading system:

SPANISH GRADING SCALE	ECTS GRADING SCALE
Matrícula de Honor (MH) – 10 con mención especial	Distinction (A)
Sobresaliente (SOB) 9-10	Excellent (A)
Notable (NOT) 8-8'99	Very Good (B)
Notable (NOT) 7-7'99	Good (C)
Aprobado (APR) 6-6'99	Satisfactory (D)
Aprobado (APR) 5-5'99	Sufficient (E)
Suspense (SUS) 0-4'99	Fail (Fx-F)
No presentado (N.P)	Absent from Exam

* Notice that the grade "Matrícula de Honor" is rarely given.

5

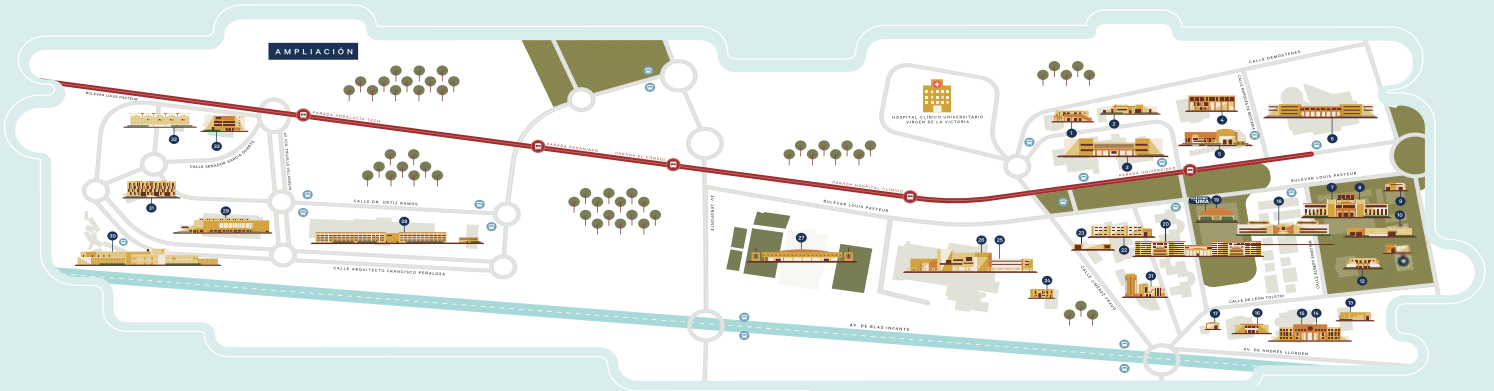
Main Locations

UMA



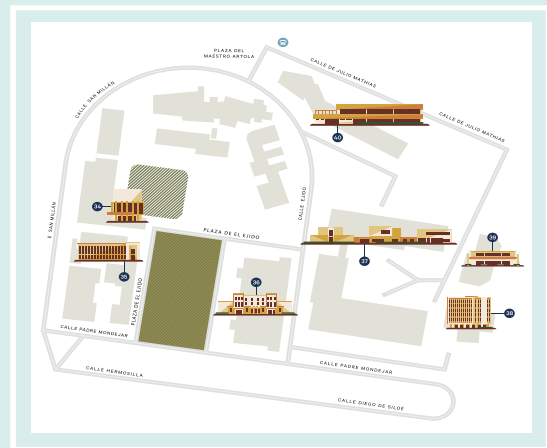
- 1 Campus de Teatinos
- 2 Ampliación Campus de Teatinos
- 3 Campus El Ejido
- 4 Rectorado de la Universidad de Malaga
- 5 Parque Tecnológico de Andalucía
- 6 Centro Internacional de Español (CIE)
- 7 Centro de Experimentación Grice Hutchinson
- 8 Residencia Jiménez Freud

CAMPUS UNIVERSITARIO DE TEATINOS



- 1 AULARIO LÓPEZ DE PEÑALVER
- 2 CENTRO DE EXPERIMENTACIÓN ANIMAL
- 3 FACULTAD DE MEDICINA
- 4 CENTRO DE INVESTIGACIONES MÉDICO-SANITARIAS
- 5 BIBLIOTECA GENERAL Y SPYDUM
- 6 FACULTAD DE DERECHO
- 7 8 COMPLEJO CIENCIAS DE LA EDUCACIÓN Y PSICOLOGÍA
- 9 CONTENEDOR CULTURAL
- 10 ESCUELA INFANTIL FRANCISCA LUQUE
- 11 AULARIO JUAN ANTONIO RAMÍREZ DOMÍNGUEZ
- 12 AULARIO GERALD BRENAN
- 13 AULARIO ISABEL OYARZÁBAL
- 14 15 FACULTAD DE TURISMO Y CIENCIAS DE LA COMUNICACIÓN
- 16 AULARIO SEVERO OCHOA
- 17 CENTRO DE TRANSFERENCIA DE RESIDUOS
- 18 FACULTAD DE FILOSOFÍA Y LETRAS
- 19 JARDÍN BOTÁNICO Y OFICINA WELCOME TO UMA
- 20 FACULTAD DE CIENCIAS
- 21 INVESTIGACIÓN Y DESARROLLO I+D Y BIBLIOTECA FACULTAD CIENCIAS
- 22 SERV. CENTRAL INFORMÁTICA Y SERV. CENTRAL APOYO A LA INVESTIGACIÓN
- 23 EDIFICIO DE INVESTIGACIÓN DEL LÁSER
- 24 EDIFICIO ROSA DE GÁLVEZ
- 25 26 E.T.S. ING. INFORMÁTICA / E.T.S. ING. DE TELECOMUNICACIÓN
- 27 COMPLEJO POLIDEPORTIVO UNIVERSITARIO
- 28 ESCUELA DE INGENIERÍAS INDUSTRIALES
- 29 COMPLEJO DE ESTUDIOS SOCIALES Y DE COMERCIO
- 30 FACULTAD DE CIENCIAS DE LA SALUD
- 31 EDIFICIO ADA BYRON
- 32 INSTITUTO DE HORTOFRUTICULTURA SUBTROPICAL Y MEDITERRÁNEA "LA MAYORA"
- 33 THE GREEN RAY

CAMPUS UNIVERSITARIO EL EJIDO



- 34 E.T.S. DE ARQUITECTURA
- 35 FACULTAD DE BELLAS ARTES
- 36 EDIFICIO DE SERVICIOS MÚLTIPLES
- 37 FACULTAD DE CIENCIAS ECONÓMICAS Y EMPRESARIALES
- 38 PABELLÓN DE GOBIERNO
- 39 PARANINFO UNIVERSITARIO
- 40 PABELLÓN DE GOBIERNO ADJUNTO

PROVINCIA DE MÁLAGA



- 41 ESTACIÓN EXPERIMENTAL "LA MAYORA"

6

UMA Services



6.1 ACCOMMODATION



6.3 PSYCHOLOGICAL ATTENTION SERVICE



6.5 CULTURE



6.2 LIBRARIES



6.4 UNIVERSITY SPORTS CENTRE

6.1 ACCOMMODATION

Renting a room in an apartment shared with other students is the most popular way of living in Malaga.

There are also several dormitories, but unlike in many other countries, this option is not so popular among exchange students. Meals, laundry, cleaning and other services are usually included, but at the same time dormitories are more expensive than sharing a flat.

Another kind of accommodation in Malaga would be to stay with a Spanish family. This might be especially beneficial for those students who wish to practice their Spanish language.

UMA does not book accommodation for students, but it assists them in finding a room or apartment through its Welcome to UMA Office completely free of charge and also through the Accommodation Service (Servicio de alojamiento).

Welcome to UMA	accommodationuma@uma.es https://www.uma.es/welcome-uma/info/113740/alojamiento
Accommodation service	alojamiento@uma.es https://www.uma.es/alojamiento/cms/menu/otras/
ESN	esn.malaga@gmail.com
CIE	cie@uma.es http://www.uma.es/centrointernacionaldeespanol/



6.2 LIBRARIES

International students will be able to use university libraries once they are officially enrolled since they will be required to show their Student ID card.

UMA has a General Library located in the Teatinos Campus, and other libraries located in different schools and faculties of the University. The main aim of all these libraries is to ensure that the university community has access to scientific information contained in published material in order to meet study, research and teaching needs.

General library services available to the academic community include reading rooms, with seating for 8,000 people, direct access to books and periodicals, check out system, bulletins (Boletín de Sumarios) summarizing the contents of the latest issues or volumes available, the Information and Reference Service (Servicio de Información y Referencia), providing access to dictionaries, guides, catalogues, etc., located in the general library via data bases, interlibrary loans and photographic documentation (Préstamo Interbibliotecario y Fotodocumentación); and lastly, user training programmes.

You can search the titles available in the different libraries in <http://jabega.uma.es/>

The library's opening hours are approximately from 8:30 a.m. to 8:45 p.m., Monday to Friday. During exams periods some of them are open 24h.

<https://www.uma.es/ficha.php?id=62379>

6.3 PSYCHOLOGICAL ATTENTION SERVICE

The Psychological Attention Service is a Service which belongs to the Delegation of the Rector for Equality and Social Engagement linked to the Faculty of Psychology and Speech Therapy. Its main goal is to provide psychological and sexological attention to the university community.

Its facilities are located in the ground floor of the Faculty of Psychology, Speech Therapy and Education.

<https://www.uma.es/servicio-de-atencion-psicologica/>

6.4 UNIVERSITY SPORTS CENTRE

UMA offers a wide range of interesting sports activities for sports enthusiasts of all levels. Furthermore, teams from the university take part in federated competitions, national university leagues and different events are organized throughout the year.

To take part in such activities or to use the university's sports facilities, apart from being enrolled at the university, students must register in the Sport Centre in order to obtain the student sport card, that will give access to the sports facilities.

The Sports Centre is located in the Teatinos Campus and consists of a wide range of modern sports facilities. The facilities cover an area of more than 76,000 square meters, at the center of which is the multiple sports area, where different state-of-the-art sports units and equipment are located. The building also includes a swimming pool and a sports track, along with squash courts, bodybuilding room, gymnasium, dressing rooms and offices.

<http://www.uma.es/uma-deportes>



6.5 CULTURE

Into a cultural center of great importance at both local and national level. Besides sponsoring different citizens' and university projects, it is geared towards the visual arts (with numerous exhibitions inside and outside the university and a regular programme at the University Art Gallery located in the Plaza de la Merced), cinema (weekly programmes, "Fantastic Film Festival," "Summer Cinema," among others) and drama (regular theatre courses, workshops, etc., activities which have led to the establishment of the Andalusian Theatre Centre in Malaga), music (the Musicology Chair R. Mitjana and the Flamenco Chair, the Contemporary Music Workshop, the Jazz Lecture Room, the University Choral Society, alternative music cycles including singer/ songwriters, youth jazz, church organ concerts, historical and religious polyphony, etc.), and literature (the Creative Literature Workshop, Literature for Children, etc.).

<http://www.uma.es/servicio-cultura>



7

Integration Support



7.1 WELCOME TO UMA

WTU Office offers personalized attention, and is a comprehensive service that provides support and information on a range of issues of interest to those visitors coming to our university from abroad such as: accommodation, transport, health insurance, university card, internet access, language support, sports, cultural and leisure activities.

Address	Bulevar Louis Pasteur, 29, Malaga, España
Telephones	+34 951 95 31 26 +34 951 95 31 27
Email	welcometouma@uma.es
Web	http://www.uma.es/welcometouma

BUDDY PROGRAMME

Arriving in a new country can be exciting but can also give rise to difficulties. Welcome to UMA Office at the University of Malaga organizes the Buddy Program as an international students service. The program provides a helping hand as you settle down and you get to know student life.

ADVANTAGES:

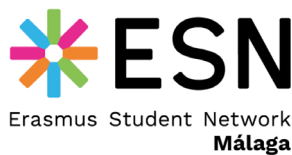
- Receive useful information about the University of Malaga before arriving
- Share classes and assignments with your buddy
- Language Training
- Participate in organized activities
- Enrich your experience in our university

Welcome to UMA Office will assign you a buddy considering the following aspects:

- The center where you will study
- The languages that you speak
- The duration of your stay at UMA (we take into account if you come for a full academic year or for the first or second semester)
- According to your personal interests and information

How can I participate?

- Fill in the Application Form (Remember that there are two models, one for the local students and the other one for foreign student). You can find them in our website: www.uma.es/welcome-uma
- Send us an Email. If you do not find the application form or you have any problem, send us an email to buddyprogram@uma.es and we will kindly answer your questions.



7.2 ERASMUS STUDENT NETWORK (ESN) MALAGA

ESN is a non-profit organization in Europe whose mission is to represent international students, thus provide opportunities for cultural understanding and self-development under the principle of Students Helping Students. ESN organizes activities and offers help to international students in Malaga (even with accommodation). These activities are focused not only in Erasmus+ students but also in all international students.

Address	Faculty of Economics and Business Calle El Ejido, 6 El Ejido Campus
Web	www.esnmalaga.org
Email	esn.malaga@gmail.com
Facebook	Erasmus Student Network Malaga



7.3 UMA-ATECH BRIDGE WITH SOUTH KOREA

We are the "bridge" that connects the University of Malaga with South Korea. Their main goal is to create bilateral relations between Korea and Spain, always bearing in mind academic and professional excellence that we seek to achieve with these approaches of professionals and institutions; as well as bringing its culture to all corners of the city of Malaga, and part of Spain. Throughout the year, they organize different cultural activities and language exchanges.

<https://www.uma.es/oficinapuentecorea>

8

Living in Malaga

DISCOVER OUR CITY

8.1 OUR CULTURE

A city with a rich historic and cultural tradition, Malaga was founded by the Phoenicians around 800 B.C. and later colonized by Iberians, Greeks, Romans, Arabs and Christians. Its privileged position on the shores of the Mediterranean, its mild climate and the friendliness of its inhabitants have all meant that the capital of the Costa del Sol has, throughout its history, sustained excellent trade and cultural relations all over the world. Nowadays, Malaga is a modern, cosmopolitan and welcoming city with over 600,000 inhabitants, which has successfully developed its commercial, industrial and tourist sectors. The climate, the warmth of its inhabitants and the light, all contribute to make Malaga a wonderful place to live in.



Weather

Malaga is a Mediterranean city with a very mild climate. Winter temperatures very rarely drop below 10°C and in autumn and spring the average temperature is about 20°C, although evenings can be a lot cooler. Average rainfall for the region is normally quite low.



Festivities

Several festivities are held in Malaga every year. The most famous and meaningful ones are Semana Santa (eastern) and la Feria de Agosto (August fair). However, there are other dates in which the city will be particularly cheerful and crowded: fiesta de San Juan (24th June), Fiesta de la Virgen del Carmen (16th July) and Carnavales (February).



Gastronomy

Andalusian gastronomy is based on the Mediterranean diet: local and fresh ingredients such as vegetables, fruit, fish and olive oil. Our cuisine and our culture in general, is the result of a convergence of cultures. Romans, Arabs, Greeks, Phoenicians and Visigoths, all contributed to the history of the Andalusian gastronomy.



Tapas are small appetizers, which are served in bars and restaurants throughout Spain. Sometimes the price includes a drink. You can eat tapas that consist in a small portion of any type of meal. You can actually have a full meal with tapas!



Meals are served late in the evening compared with the rest of Europe: breakfast is normally eaten between 7.30 a.m. and 10.30 a.m. Lunch is served from 2 p.m. to 4 p.m. and dinner from 8.00 p.m. and 11 p.m. However, most of restaurants adapt their times to the European norms and will serve food earlier.

Entertainment and Leisure

Picasso's hometown is more and more recognized as an important cultural destination. The capital city of La Costa del Sol offers a wide variety of museums and exhibitions as well as theatres and halls.

You should not miss the opportunity to get into our history and customs, our learning about the finest international art.

Special Attention: Students should take special care of their personal belongings. It is extremely unadvisable to leave any unsupervised items as smartphones, bags, jackets in any pub, shop, beach, etc. Important documents and large sums of cash should be left at home.



8.2 ARRIVAL IN MALAGA



Airport

For students arriving at the international airport "Pablo Ruiz Picasso" (only 12 Km from MALAGA), there are three ways for travelling into town.

A taxi costs between 15/22 € and takes roughly 15 minutes to reach the city centre. The rank is located directly outside the arrivals terminal.

There is a bus into town every 30 minutes, line A. A ticket costs 3.00 €. The stop is located directly outside the arrivals terminal.

There is a short distance RENFE train, line C-1 Fuengirola-Malaga Centre (Alameda) every 20 minutes and it costs 1.80 €. The station is located under the T3 terminal and it can be accessed by the transport interchanger.

Students are advised to carry some cash on them when they arrive in Malaga (50 € ought to be enough). Additionally, buses do not accept anything larger than 5.00 € notes.



Railway

Maria Zambrano Railway Station connects the city to the capital of Spain through the High-Speed line (AVE) Malaga-Córdoba-Madrid in a two-hour and a half journey. The Malaga-Cordoba-Seville route takes 1 hour and 55 minutes. Furthermore, the railway network connects the capital to other areas in Malaga located on the Costa del Sol, Valle del Guadalhorce, and the Airport through Malaga's regional lines.



Bus station

Malaga's Bus Station establishes connections between the capital, Malaga's municipalities, and the main Spanish and European cities. In addition, there is a Bus Station in Muelle Heredia, at the city centre near Malaga's Port, which connects to several localities of the metropolitan area.

8.3 URBAN TRANSPORT IN MALAGA



BUS

Routes **1** y **13** connect the El Ejido campus with different parts of the town.

Routes **22**, **25**, **18** and **8** are the ones to take to go to the **Teatinos campus**.

Route **11** connects **Teatinos - El Palo** (International Centre for Spanish).

Route **L** connects **Teatinos campus with Ampliación**.

For those living in the city center, the main buses stop to both campuses are located in Alameda Principal. For further information about buses in Malaga: <http://www.emtmalaga.es> or download the EMT Malaga app.

	FARES
SINGLE TICKET	1,30 €
AIRPORT TICKET	3,00 €
MULTITRAVEL CARD (10 TRIPS)	8,30 €
MONTHLY STUDENT CARD (UNLIMITED NUMBER OF TRIPS) UNDER THE AGE OF 26	27,00 €
MONTHLY CARD (UNLIMITED NUMBER OF TRIPS) OVER THE AGE OF 26	39,95 €

Students can apply for a monthly student card that enables them to make an unlimited number of trips within the city and costs 27€. Only students under the age of 26 registered at UMA can apply for the student bus card. For those over this age limit, there are several other options: The "monthly card" which costs 39.95€, allows a holder to make an unlimited number of trips within the city limits. Application Form and procedure will be activated upon the arrival of the student.

The cards are bought at licensed tobacco shops ("estanco" in Spanish) and kiosks throughout the city.





SUBWAY/TRAM

L1 Andalucía Tech-El Perchel

Through Ampliación and Teatinos campus to central bus and train stations (El Perchel).

L2 Palacio de los Deportes-El Perchel

Connects a large area of the city.

FARES

OCCASIONAL TICKET

1,35 €

MALAGA TRAM TRAVEL CARD

0,82 €

TRANSPORT CONSORTIUM TRAVEL CARD (METRO + BUS)

0,82€ + Bus 0,65 €

* For further information visit

📍 <https://metromalaga.es/>

☎ +34 902 112 223

✉ info@metromalaga.es





SHORT DISTANCE TRAINS: CERCANÍAS

Malaga is connected to towns along la Costa del Sol and el Valle del Guadalhorce through the network of short distance trains: Cercanías.

LINES :

The network consists in two lines:

C-1 Malaga – Airport – Fuengirola

C-2 Malaga – Álora

TICKETS	ZONES 1/2	ZONES 3	ZONES 4	ZONES 5
SINGLE TICKET	1,80€	2,05€	2,70€	3,60€
BONOTREN (10 VIAJES)	11,95€	13,85€	18,70€	25,05€
MONTHLY TICKET	35,80€	42,00€	60,85€	75,70€
UNLIMITED MONTHLY TICKET	47,85€	55,33€	74,70€	100,15€
STUDENT*	89,60€	111,50€	171,45€	210,85€

You can find further information (in Spanish) in:

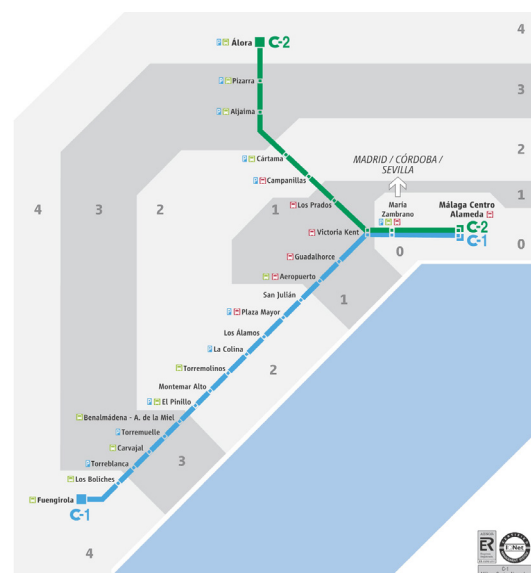
➔ <http://www.renfe.com/viajeros/cercanias/malaga/index.html>

* Student tickets can be acquired at any station. You must bring the Student Card o the enrollment document in order to acquire it. It can be used during a natural semester (Oct- Dec, Jan-Mar, and April to 15th July).

	Málaga Centro Alameda - Fuengirola
	Málaga Centro Alameda - Álora

	Parking en la estación
	Conexión con Bus urbano
	Conexión con Bus

	Información para viajeros con movilidad reducida Atendo 902 24 05 05
--	---





8.4 BANK HOLIDAYS

The following dates are the bank holidays in Malaga during the 2019/2020 academic year. Most establishments and public buildings will be closed during these dates and university lectures are stopped. Please notice that some schools and faculties may stop lectures due to particular festivities.

2020

8th of September: Virgen de la Victoria.
12th of October: Día Nacional de España
1st of November: Día de Todos los Santos
6th of December: Día de la Constitución Española
8th of December: Inmaculada Concepción
25th of December: Natividad del Señor

2021

1st of January: Año Nuevo
6th of January: Epifanía del Señor
28th of February: Día de Andalucía
11st of April: Jueves Santo
2nd of April: Viernes Santo
1st of May: Día del Trabajador

Particular festivities of University of Málaga

- Opening day: normally by the end of September
- Santo Tomás de Aquino: 28th January
- Each Faculty or school has its own patron day



8.5 SHOPPING HOURS

Normal opening hours for small shops from 9.30 a.m. to 1.30 p.m. and from 5 p.m. to 8.30 p.m.

There are many shopping centers open from 10 a.m. to 10 p.m. Although shops are usually closed on Sundays, there are a number of small grocers and delicatessens which are open in the city center during the weekends.



8.6 POST OFFICES

OPENING HOURS

CITY CENTR C/ Santa Lucía nº 7	MONDAY-FRIDAY 8.30h - 20.30h	SATURDAY 9.30h - 13.00h
TEATINOS Av. Parménides nº 13	MONDAY-FRIDAY 8.30h - 14.30h	SATURDAY 9.30h - 13.00h
MALAGUETA C/ del Puerto nº 11	MONDAY-FRIDAY 8.30h - 14.30h	SATURDAY 9.30h - 13.00h
TRAIN STATION Explanada de la Estación	MONDAY-FRIDAY 8.30h - 14.30h	SATURDAY 9.30h - 13.00h

8.7 HEALTH CARE

EUROPEAN STUDENTS

European students must obtain the European Health Insurance Card before leaving the home country. It entitles the student to medical treatment in Spain under the same conditions as Spanish citizens. Here you will find further information about the European Health Insurance Card:

<http://ec.europa.eu/social/main.jsp?catId=559&langId=en#navItem-2>

<https://ec.europa.eu/social/main.jsp?catId=653&langId=en#navItem-relatedLinks>

This European Health Insurance Card will be necessary in order to register in the nearest health centre to

the accommodation in Malaga. It is recommended to follow this step as soon as possible after the arrival in Malaga. Please, consult the nearest health centre to your accommodation in this link: <http://bit.ly/centro-salud-uma>

Once you have been assigned a family doctor, you can make an appointment if you follow this instructions: <http://bit.ly/cita-medico>

For any emergency, you can go directly to the emergency department in any public hospital with your European Health Insurance Card. Here you will find more information about public hospitals in Malaga: <http://bit.ly/emergencia-salud>

If you have any further doubt, please ask directly in any public health centre or hospital.

NON-EUROPEAN NATIONALITY STUDENTS

Before arriving in Malaga, students with Non-European nationality must take out a private health insurance to cover them from their arrival date until their departure to home country. This will provide the holder with medical coverage during their stay in Spain.

IMPORTANT: Non-European students must consult with the insurance company prior to arrival the conditions and procedures to follow in Malaga in order to receive medical attention.

In case that any incoming student would like to take out an additional insurance, we recommend the following insurance companies which offer special conditions to incoming exchange students:



- **Oncampus:** <http://oncampus.es>
- **Montymarq:** <https://montymarq.es/universitasmundi/>

VACCUNATIONS AND PRESCRIPTION DRUGS

No special vaccinations are required or recommended before travelling to Spain. Students following a course of treatment should bring enough prescription drugs to be provided during their stay in Malaga.

CHEMIST'S

Most chemist's open from 9.30 a.m. to 1.30 p.m. and from 5 p.m. to 8.30 p.m. Nevertheless, some establishments open from 10 a.m. to 10 p.m. and others 24 hours a day. When in doubt, consult the local newspaper or the list displayed in all establishments.

8.8 STUDENT VISA (ONLY FOR NON-EUROPEAN STUDENTS)

Student visa is mandatory for any foreigners who do not belong to any of the countries of the European Union, Norway, Iceland and Liechtenstein wishing to study in Spain for more than 90 days.

The visa or residence permit must be processed in your country of residence prior to your arrival in Malaga. To apply for a visa please contact the nearest Spanish Embassy or Consulate in your country. This should be done as soon as you have received the letter of acceptance from UMA. The application must be submitted personally, with the official form in the Spanish Consular Office or Embassy in your country.

To find the closest Spanish Embassy in your country, visit:

<http://www.exteriores.gob.es/Portal/en/ServiciosAlCiudadano/Paginas/EmbajadasConsulados.aspx>



It is important that you apply for a student visa. Otherwise, you will not be able to extend your stay in Spain as a student. The visa is affixed in your passport and must be presented at the border officials at the port of entry.

Non-European students are responsible for the application of their VISA or any other procedures established by the Spanish Embassy /Consulates in home country prior to the arrival in Malaga.

NON-EUROPEAN STUDENTS WITH A RESIDENCE PERMIT IN AN EUROPEAN COUNTRY

Please, consult the procedures established by the Spanish Embassy /Consulates in your home country prior to your arrival in Malaga if you want to avoid future problems.

TIE- TARJETA DE IDENTIDAD DEL EXTRANJERO [ONLY FOR NON-EUROPEAN STUDENTS]

Non-European Students, who will stay in Malaga for more than 180 days, must acquire the Spanish Student Residency Card called TIE (Tarjeta de Identidad del Extranjero). This TIE will include a NIE (Foreign Identity Number). You will find further information about the application of this card on this link:

<http://extranjeros.mitramiss.gob.es/es/InformacionInteres/InformacionProcedimientos/Ciudadanosnocomunitarios/hoja092/>

To make an appointment or obtain further information, click on this link:

https://sede.administracionespublicas.gob.es/icpplus/citar?accion=ac_info&i=es&org=AGE&p=29&t=4010&sbt=&nsbt=&dsbt

9

Relevant information

PHONES OF INTEREST

Local Police Department: 092

Policía nacional: 091

Urgent Medical Assistance: 061

All Emergencies: 112

Firefighter: 080

Carlos Haya/Hospital Civil/Hospital Clínico Universitario: +34 951 29 00 00

Airport: 952 04 84 84

Bus Station: +34 952 35 00 61

Taxis: +34 952 32 00 00 y +34 952 33 33 33

Train Station: +34 902 24 02 02

OFFICES OF INTEREST

 Malaga City Council:
<http://www.malaga.eu>

 Consulates:
<http://www.malagaturismo.com/es/secciones/consulados/27>

 Map of the City A to Z:
<http://sig.malaga.eu/guia/>

 Airport:
<http://www.aena.es>

 Train:
<http://www.renfe.es>

 Underground:
<https://metromalaga.es/>

 City Buses company-EMT:
<http://www.emtmalaga.es>



FOREIGN TOURIST ATTENTION SERVICE

-  Plaza de la Marina, 11 29015 Malaga
 -  + 34 951 926 161
 -  malaga.sate@policia.es
-

MÁLAGA TOURIST OFFICE

-  Plaza de la Marina, 11 29015 Malaga
 -  +34 951 92 60 20
 -  www.malagaturismo.com/
 -  info@malagaturismo.com
-

AIRPORT TOURIST OFFICE

-  T3 Llegadas
 -  +34 951 294 003
 -  otaemalaga@andalucia.org
-

IMMIGRATION OFFICE

-  Calle Mauricio Moro Pareto, 13, 29006 Malaga
 -  +34 952 98 04 60
 -  infoextra.malaga@seap.minhap.es
-

LOST PROPERTY OFFICE

-  Pje. la Trini, 15, 29012
 -  +34 951 926 111
 -  omop@malaga.eu
-

POLICE STATION

-  Plaza de Manuel Azaña, 3, 29006 Malaga
 -  +34 952 04 62 00
-