



# UNIVERSITY of MALAGA

---



UNIVERSIDAD  
DE MÁLAGA

| [uma.es](http://uma.es)

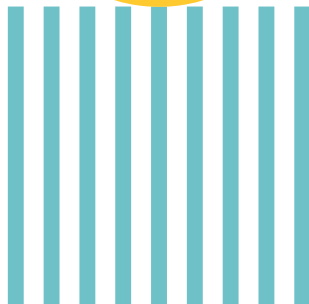
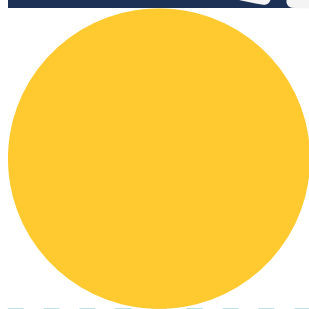
INTERNATIONAL STAFF WEEK

MAY 9<sup>th</sup> - MAY 12<sup>th</sup> 2022



# Erasmus+ staff training week

## GUIDE



**1**

**Arrival in Malaga**

PÁG 3

**2**

**Introducing UMA**

PÁG 4

**3**

**International Mobility office**

PÁG 5

**4**

**STAFF WEEK PROGRAMME**

PÁG 6

**5**

**Staying in Malaga**

PÁG 8

**4.1 Post Office** PÁG 9

**4.2 Urban transport** PÁG 10

**6**

**Our culture**

PÁG 12

**7**

**Useful information**

PÁG 14

**8**

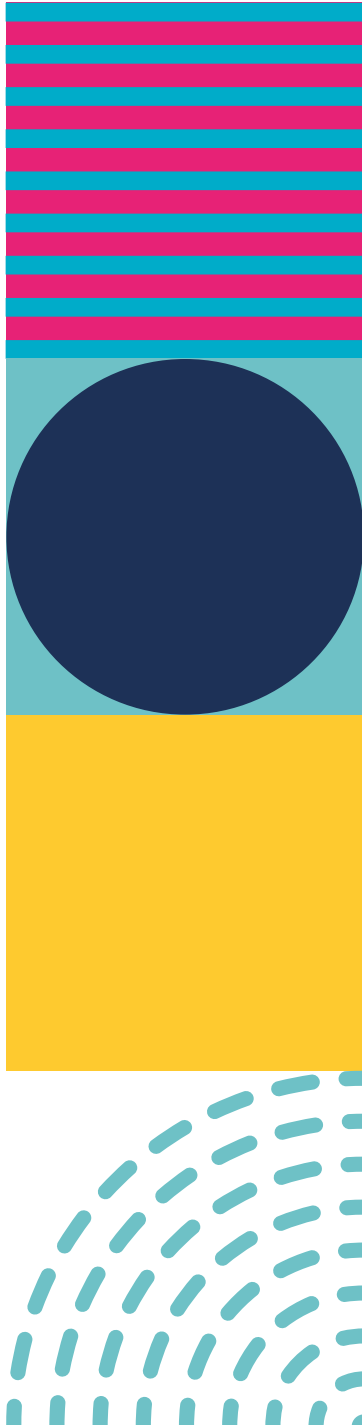
**Accommodation**

PÁG 15

# 2

## Arrival in Malaga

### AIRPORT/ RAILWAY/ BUS



#### **Airport**

Arriving at the international airport "Pablo Ruiz Picasso" (only 12 Km from Malaga city centre), there are three ways for travelling into town:

##### **TAXI**

A taxi costs between 15/22 € and takes roughly 15 minutes to reach the city centre. The rank is located directly outside the arrivals terminal.

##### **BUS**

There is a bus into town every 30 minutes, line A. A ticket costs 3.00€. The stop is located directly outside the arrivals terminal.

##### **Train**

Trains leave the station connected by a pedestrian walkway to the departure terminal every 30 minutes, and a ticket to Malaga costs 1.80€.

Visitors are advised to carry some cash on them when they arrive in Malaga (50 € ought to be enough).

Additionally, buses do not accept anything larger than 5.00 € bills.

#### **Railway**

The Malaga-Maria Zambrano Railway Station connects the city to the capital of Spain through the High-Speed line (AVE) Malaga-Cordoba-Madrid in a two-hour and a half journey. The Malaga-Cordoba-Seville route takes 1 hour and 55 minutes.

Furthermore, the railway network connects the capital to other areas in Malaga located on the Costa del Sol, Valle del Guadalhorce, and the Airport through Malaga's regional lines.

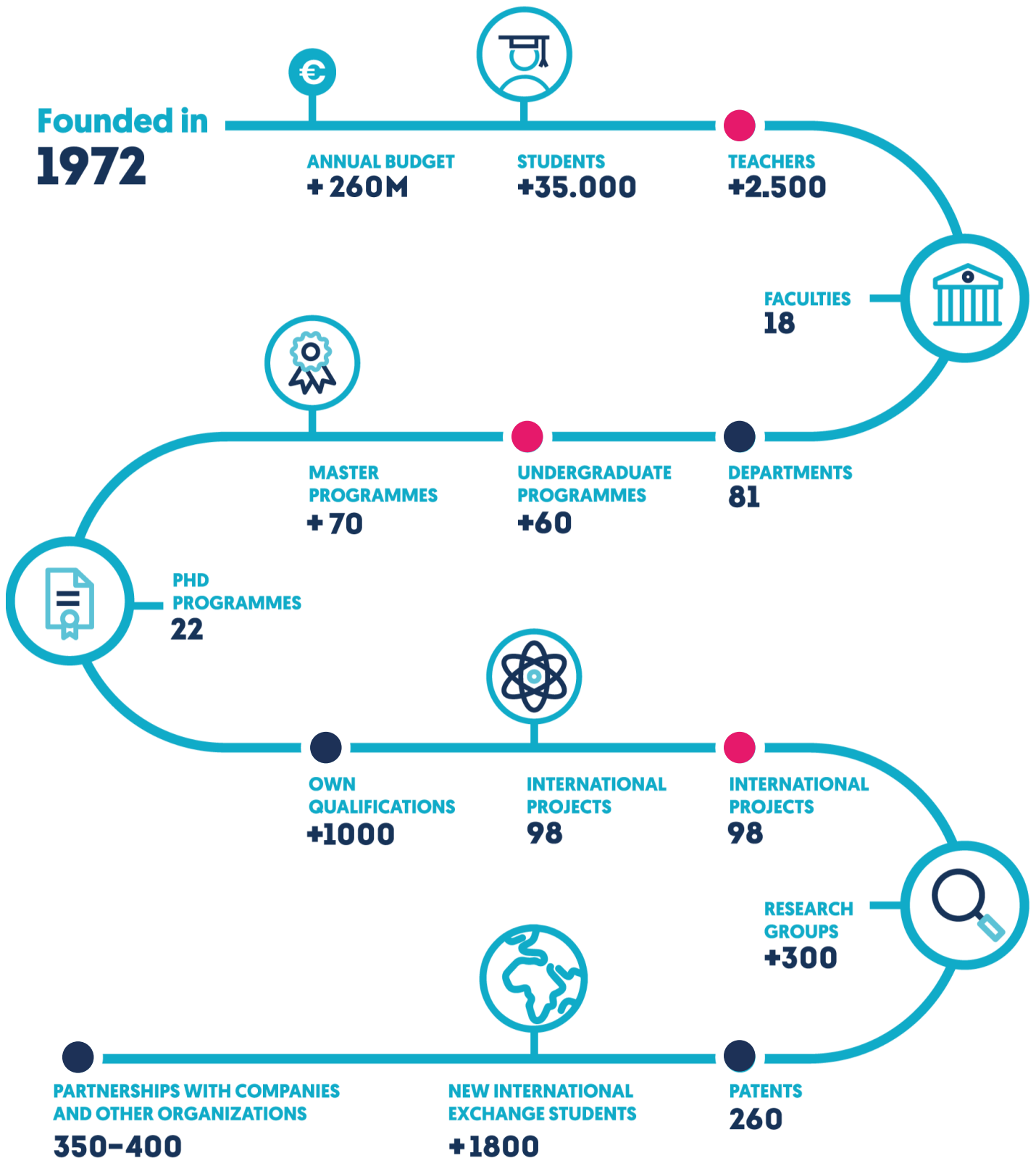
#### **Bus Station**

Malaga's Bus Station establishes connections between the capital, Malaga's municipalities, and the main Spanish and European cities. In addition, there is a Bus Station in Muelle Heredia, at the city centre near Malaga's Port, which connects to several localities of the metropolitan area.

2

# Introducing UMA

IN NUMBERS





# 3

## International Mobility and Cooperation office

### GOVERNING

#### BOARD

**Susana Cabrera Yeto**

INTERNATIONAL MOBILITY AND COOPERATION  
VICE-CHANCELLOR

+34 952 133 203 | vrinternacional@uma.es

**José Jesús Delgado**

INTERNATIONAL COOPERATION  
DEPUTY VICE-PRESIDENT

+34 952 136 339 | vra.coopinternacional@uma.es

**Elidia Beatriz Blázquez**

INTERNATIONAL MOBILITY DEPUTY VICE-PRESIDENT

+34 952 136 512 | vra.movilidad@uma.es

**Ricardo del Milagro**

INTERNATIONAL MOBILITY AND COOPERATION  
HEAD

+34 952 136 512 | movilidad@uma.es

### INCOMING

#### TEAM

**Laura Mena / Clara González**

ERASMUS+ INCOMING

+34 952 136 512 | erasmusincoming@uma.es

**Delia García**

INFO + ENROLLMENT

+34 951 953 117 | digarcia@uma.es

**Magdalena Chica**

STUDENT ADVISOR

+34 951 953 116 | magdach@uma.es

### International HUB

#### OFFICE

**Miriam Seghiri**

UMA INTERNATIONAL HUB DIRECTOR

951 953 127 | dir.internationalhub@uma.es

**Diana Gardumi**

UMA INTERNATIONAL HUB ADVISOR

+34 951 953 126 | internationalhub@uma.es

**Isabel Cristina Rocha**

UMA INTERNATIONAL HUB ADVISOR

+34 951 953 127 | internationalhub@uma.es

**Mathías Montenegro**

UMA INTERNATIONAL HUB ADVISOR

+34 951 952 773 | internationalhub@uma.es

### OUTGOING

#### TEAM

**Lilian Barranco**

ERASMUS KA103 RESPONSIBLE/AGREEMENTS

+34 952 133 203 | lbarranco@uma.es

**Virginia Escriche**

PROGRAM COORDINATOR

+34 951 953 114 | vescriche@uma.es

**Teresa Rojas**

STAFF ADVISOR

+34 952 134 282 | trojas@uma.es

**Isabel Martín**

STUDENT ADVISOR

+34 951 953 116 | mma@uma.es

### ERASMUS+ KA107

#### CREDIT MOBILITY PROGRAMME

**Lorena Caro**

STUDENT ADVISOR

+34 952 136 302 | lorenacaro@uma.es

**Ana Laura López**

STAFF ADVISOR

+34 952 136 302 | mamoreno@uma.es



# PROGRAMME

The University of Malaga's ERASMUS + International Staff Week 2022 is a training and exchange week for European Higher Education institutions' staff.

During this week, participants will attend workshops and talks given by the University of Malaga's staff about services and programmes offered by the University, as well as the culture of the region.

This event is a great opportunity to establish links and collaborations among the participating universities' professionals, thus contributing to the international projection of the University of Malaga and the Higher Education institutions represented.

## 9<sup>TH</sup> MAY

---

Registration

---

Welcome and Staff Week opening

---

Visit to Town hall

---

Presentations of University services I

---

Workshop on Spanish culture I

---

Lunch break offered by UMA: typical Andalusian "tapas" (appetizers)

---

Guided tour of the city centre

---

## 10<sup>TH</sup> MAY

---

Presentation of University services II

---

Workshop on Spanish culture II

---

Visit to University services

---

Flamenco Workshop

---

# 11<sup>TH</sup> MAY

## Presentation of University services II

Workshop on Spanish culture II

## Discussion on best practices I

## Visit to Picasso Museum

# 12<sup>TH</sup> MAY

## Discussion on best practices II (KA103 and KA107)

## Andalusia's gastronomy workshop

## Q&A and Closure

\* This programme is **provisional** and may be subject to changes, of which participants will be notified



5

# Staying in Malaga

## MEDITERRANEAN CITY

A city with a rich historic and cultural tradition, Malaga was founded by the Phoenicians around 800 B.C. and later was colonized by Iberians, Greeks, Romans, Arabs and Christians. Its privileged position on the shores of the Mediterranean, its mild climate and the friendliness of its inhabitants have all meant that the capital of the Costa del Sol has, throughout its history, sustained excellent trade and cultural relations all over the world. Nowadays, Malaga is a modern, cosmopolitan and welcoming city with over 600,000 inhabitants, which has successfully developed its commercial, industrial and tourist sectors. The climate, the warmth of its inhabitants and the light, all contribute to make Malaga a wonderful place to live in.



Malaga is a Mediterranean city with a very mild climate. Winter temperatures very rarely drop below 10°C and in autumn and spring the average temperature is about 20°C, although evenings can be a lot cooler. Average rainfall for the region is normally quite low.



Regular opening hours for small shops from 9.30 a.m. to 1.30 p.m. and from 5 p.m. to 8.30 p.m. There are many shopping centres open from 10 a.m. to 10 p.m. Although shops are usually closed on Sundays, there are a number of small grocers and delicatessens, which are open in the city centre during the weekends.



## 5.1



## Post office

### OPENING TIMES

<b>CITY CENTRE</b> C/ Santa Lucía nº 7	<b>MON-FRI.</b> 8.30h - 20.30h	<b>SAT.</b> 9.30h - 13.00h
<b>TEATINOS</b> Av. Parménides nº 13	<b>MON-FRI.</b> 8.30h - 14.30h	<b>SAT.</b> 9.30h - 13.00h
<b>MALAGUETA</b> C/ del Puerto nº 11	<b>MON-FRI.</b> 8.30h - 14.30h	<b>SAT.</b> 9.30h - 13.00h
<b>TRAIN STATION</b> Explanada de la Estación	<b>MON-FRI.</b> 8.30h - 14.30h	<b>SAT.</b> 9.30h - 13.00h



## 5.2 Urban transport IN MALAGA



### BUS

Route **11** and **8** connect Teatinos – City Centre  
Route **L** connects Teatinos campus with Campus extension

#### FARES

##### SINGLE TICKET

1,30 €

##### AIRPORT TICKET

3,00 €

##### MULTITRAVEL CARD\* (10 TRIPS)

8,30 €

\* The cards are bought at licensed tobacco shops (Estanco in Spanish) and kiosks throughout the city.



### SUBWAY/TRAM

#### L1 Andalucía Tech-El Perchel

Through Teatinos campus to central bus and train stations (Vialia-El Perchel).

#### L2 Palacio de los Deportes-El Perchel

Connects a large area of the city

#### FARES

##### REGULAR TICKET

1,35 €

##### CASH CARD

0,82 €

##### CASH CARD (PARTNERSHIP)

0,82€ + Bus 0, 65 €

\* For further information visit:

🖱 <https://metromalaga.es/>

☎ +34 902 112 223

✉ [info@metromalaga.es](mailto:info@metromalaga.es)







## SHORT DISTANCE TRAINS: CERCANÍAS

Malaga is connected to towns along la Costa del Sol and el Valle del Guadalhorce through the network of short distance trains: Cercanías.

### LINES

The network consists in two lines:  
C-1 Malaga – Airport – Fuengirola  
C-2 Malaga – Álora

TICKETS	1/2 ZONES	3 ZONES	4 ZONES	5 ZONES
<b>SINGLE TICKET</b>	1,80€	2,05€	2,70€	3,60€
<b>BONOTREN (10 JOURNEYS)</b>	11,95€	13,85€	18,70€	25,05€

\* For further information visit:

➤ <http://www.renfe.com/viajeros/cercanias/malaga/index.html>

C-1

Malaga Centro Alameda - Fuengirola

C-2

Malaga Centro Alameda - Álora

P

Parking en la estación

U

Conexión con bus urbano

B

Conexión con bus

A

Información para viajeros con  
 movilidad reducida  
 Atendo 902 24 05 05



# 6

## Our culture

### FESTIVITIES, GASTRONOMY, ENTERTAINMENT

#### Festivities



Several festivities are held in Malaga every year. The most famous and meaningful ones are "Feria de Agosto" (August Fair) and "Semana Santa" (Easter Holy Week). However, there are other dates in which the city will be decked out and full of people: Fiestas de San Juan, fiesta de la Virgen del Carmen, Carnaval and fairs.

#### Gastronomy



Andalusian gastronomy is based on the **Mediterranean diet**: local and fresh ingredients such as vegetables, fruit, fish and olive oil. Our cuisine and our culture in general, is the result of a convergence of cultures. Romans, Arabs, Greeks, Phoenicians and Visigoths, all contributed to the history of the Andalusian gastronomy.

**Tapas** are small appetizers, which are served in bars and restaurants throughout Spain. Sometimes the price includes a drink. You can eat

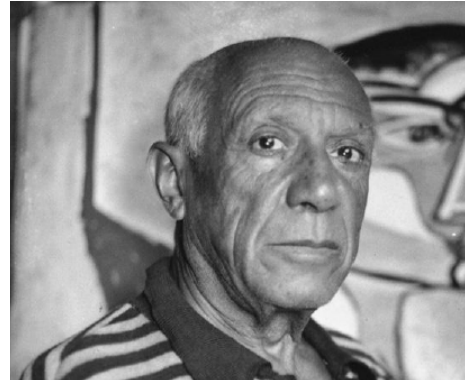
tapas that consist in a small portion of any type of meal. You can actually have a full meal with tapas.

Meals are served late in the evening compared with the rest of Europe: breakfast is normally eaten between **7.30 a.m. and 10.30 a.m.** Lunch is served from **2 p.m. to 4 p.m.** and dinner from **8.00 p.m. and 11 p.m.** However, most of restaurants adapt their times to the European norms and will serve food earlier.





## Entertainment and Leisure



Picasso's hometown is becoming more and more recognized as an important cultural destination. The capital city of La Costa del Sol offers a wide variety of museums and exhibitions as well as theatres and halls.

You should not miss the opportunity to get into our history and customs, our learning about the finest international art.

## Weekends fun



Malaga has an exciting and varied nightlife. While the city center's shops close, numerous bars offer foreigners the chance to get to know the locals.

During the weekend, countless people gather there to visit the bars and pubs to enjoy the night scene in Malaga. The locals usually do not go partying before midnight, and it is normal to go back home after sunrise, but not without having some breakfast on the way back.

# 7

## Useful information

### PHONES AND LINKS

#### Emergency phone numbers

Local Police Department: **092**

National Police Department: **091**

Urgent Medical Assistance: **061**

All Emergencies: **112**

Firefighter: **080**

#### Useful links

 Malaga City Council:  
<http://www.malaga.eu>

 Consulates:  
<http://www.malagaturismo.com/es/secciones/consulados/27>

 Map of the City A to Z:  
<http://sig.malaga.eu/guia/>

 City Buses company-EMT:  
<http://www.emtmalaga.es>

 Airport:  
<http://www.aena.es>

 Train:  
<http://www.renfe.es>  
Underground: <https://metromalaga.es/>

8

# Accommodation

## IN MALAGA

### ALCAZABA PREMIUM HOSTEL

📍 Calle AlcazabillaQ, 12, 29015  
☎ +34 952 22 98 78

From 31€ per night (shared room)  
[alcazabapremiumhostel.com](http://alcazabapremiumhostel.com)

### ATARAZANAS Malaga BOUTIQUE HOTEL

📍 Calle Atarazanas, 19, 29005  
☎ +34 952 12 19 10

From 82€ per night  
[hotel-atarazanas-malaga.com/en/](http://hotel-atarazanas-malaga.com/en/)

### HOTEL DON CURRO

📍 Calle Sancha de Lara, 9, 29015  
☎ +34 952 22 72 00

From 124€ per night  
[hoteldoncurro.com](http://hoteldoncurro.com)

### BARCELÓ Malaga

📍 Calle Héroe de Sostoa, 2, 29002  
☎ +34 952 04 74 94

From 130€ per night  
[barcelo.com/es/](http://barcelo.com/es/)

### PETIT PALACE Malaga

📍 Calle Nicasio Calle, 3, 29015  
☎ +34 952 22 21 32

From 148€ per night  
[petitpalaceplazamalaga.com](http://petitpalaceplazamalaga.com)

### HOTEL IBIS MALAGA CENTRO

📍 Calle Cerrojo, 1, 29007  
☎ +34 952 07 07 41

From 56€ per night (shared room)  
[accorhotels.com/es](http://accorhotels.com/es)

### EUROSTAR

📍 Calle Héroes de Sostoa, 17, 29002  
☎ +34 951 01 01

From 112€ per night  
<https://www.eurostarshotels.com/>

### ROOM MATE LARIOS

📍 C/ Marqués de Larios, 2, 29005  
☎ +34 952 22 22 00

From 126€ per night  
[room-matehotels.com](http://room-matehotels.com)

### AC HOTEL BY MARRIOTT MALAGA PALACIO

📍 Calle Cortina del Muelle, 1, 29015  
☎ +34 952 21 51 85

From 147€ per night  
[marriott.com](http://marriott.com)

### HOTEL MOLINA LARIO

📍 Calle Molina Lario, 20, 29015  
☎ +34 952 06 20 02

From 190€ per night  
[hotelmolinalario.com](http://hotelmolinalario.com)