

Cantus

San - - ctus, san - -

Altus

San - - - ctus san -

Tenor

San - - ctus, *san* - *ctus*, san-

Bassus

San - - - ctus, *san* - -

Detailed description: This musical score is for four voices: Cantus, Altus, Tenor, and Bassus. It is in common time (C) and features Latin lyrics for 'Sanctus' and 'sanctus'. The Cantus part begins with a whole note 'San' followed by a half note 'ctus', then a whole note 'san' followed by a half note 'ctus'. The Altus part begins with a whole rest, followed by a half note 'San', then a quarter note 'ctus', then a quarter note 'san', and finally a half note 'ctus'. The Tenor part begins with a whole rest, followed by a half note 'San', then a quarter note 'ctus', then a quarter note 'san', and finally a half note 'ctus'. The Bassus part begins with a whole rest, followed by a half note 'San', then a quarter note 'ctus', then a quarter note 'san', and finally a half note 'ctus'. The lyrics are: Cantus: San - - ctus, san - -; Altus: San - - - ctus san -; Tenor: San - - ctus, *san* - *ctus*, san-; Bassus: San - - - ctus, *san* - -.

6

- - ctus Do - mi-nus De - us sa - ba - oth
 - - ctus Do - mi-nus De - us sa - ba-oth, *Do - mi-*
 - - ctus Do - mi - nus De - us sa - ba - oth_____ Do -
 - - ctus Do - mi-nus De - us sa - - ba-oth, *Do -*

13

Do - mi-nus De - us sa - - ba - oth.

⁸ nus De - us sa - ba - oth Do - mi-nus De-us sa - ba-oth.

⁸ - mi-nus De - us sa - ba - oth, Do - mi-nus De - us sa - ba-oth.

- mi-nus De - us sa - ba - oth, sa - ba - oth.

Musical notation for the phrase "Pleni sunt". The notation is on a single staff with a treble clef. It consists of four quarter notes: G4, A4, B4, and C5. A slur is placed over the last three notes (A4, B4, and C5). The lyrics "Ple - ni" are written under the first two notes, and "sunt" is written under the last note. There is a long horizontal line under the word "ni" that extends to the right, and a shorter horizontal line under "sunt".

Ple - ni _____ sunt

20

Cantus

Cæ - - li et ter - ra glo - ri -

Altus

8 Cæ - - - li et ter - - - ra glo -

Tenor

8 Cæ - - li et ter - - - ra

Bassus

Cæ - - - li et ter - - - ra glo - ri -

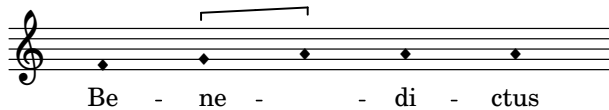
28

a tu - a. Ho - san - na in ex - cel - sis.

⁸ - ri - a tu - a. Ho - san - na in ex - cel - sis.


⁸ glo - ri - a tu - a. Ho - san - na in ex - cel - sis, in ex - cel - sis.

a tu - a. Ho - san - na in ex - cel - sis.




37

Cantus




Qui ve - - - nit

Altus




8 Qui ve - - - - - nit in no-mi-

Tenor



8 Qui ve - - - - - nit

Bassus



Qui ve - - - - - nit in

43

in no - mi - ne Do - mi - ni.

ne Do - mi - ni, in no-mi-ne Do - mi - ni.

in no-mi-ne Do - mi - ni in no-mi-ne Do - mi - ni. Ho-san - na in -

no-mi-ne Do - mi - ni, in no-mi - ne Do - mi - ni. Ho-san -

50

Ho - san - na in ex - cel - sis.

Ho - san - na in ex - cel - sis, in ex - cel - sis.

ex - cel - sis ho - san - na in ex - cel - sis, in ex - cel - sis.

- na in ex - cel - sis, ho - san - na in ex - cel - sis.