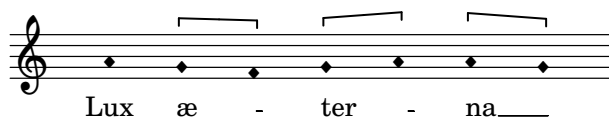


7. Communio

de la Missa pro Defunctis a 4

1583a, 1592

Tomás Luis de Victoria (c.1548-1611)



Lux æ - ter - na

Cantus
Lu - ce - at e - is Do -

Altus
Lu - ce - at e - is, lu - ce - at e - is Do -

Tenor
Lu - ce - at e - is Do -

Bassus
Lu - ce - at e - is, lu - ce - at e - is Do -

7
- mi - ne. Cum san - ctis tu - is in æ - ter -

- mi - ne. Cum san - ctis tu - is cum san - ctis tu - is in æ -

- mi - ne. Cum san - ctis tu - is cum san - ctis tu - is in æ -

- mi - ne. Cum san - ctis tu - is, cum san - ctis tu - is cum san - ctis tu - is in æ -

14
- - num: qui - a pi - - us es.

ter - - num: qui - a pi - - us es.

ter - - num: qui - a pi - - us es.

ter - - num: qui - a pi - - us es.

Re - qui - em æ - ter - nam do - na e - is Do - mi - ne:

21

Cantus
Et lux per - pe - tu - a lu - ce - at e -

Altus
Et lux per - pe - tu - a lu - ce - at e - is lu - ce - at e -

Tenor
Et lux per - pe - tu - a lu - ce - at e - is, lu - ce - at

Bassus
Et lux per - pe - tu - a lu - ce - at e - is, lu - ce - at e -

27

- - is: cum san - ctis tu - is in æ - ter -

- - is: cum san-ctis tu - is cum san-ctis tu - is in æ -

e - is: cum san-ctis tu - is cum san-ctis tu - is in æ -

- - is: cum san-ctis tu - is, cum san-ctis tu - is cum san-ctis tu - is in æ -

34

- - num: qui - a pi - - us es.

ter - - num: qui - a pi - - us es.

ter - - num: qui - a pi - - us es.

ter - - num: qui - a pi - - us es.